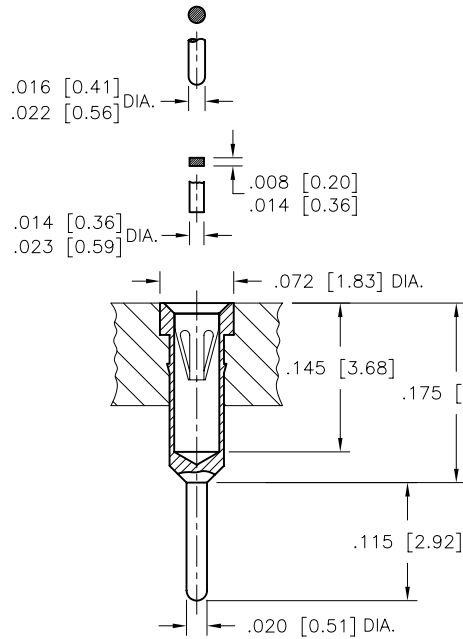
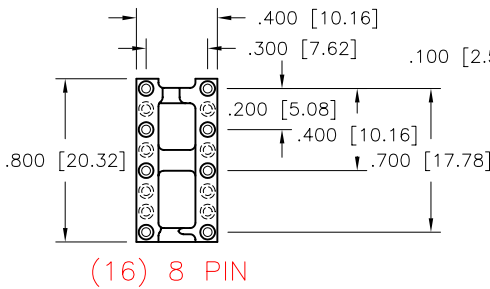
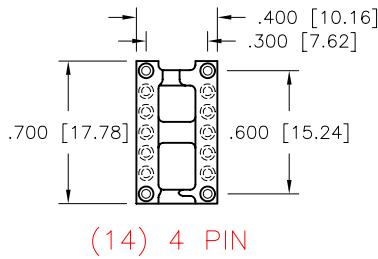
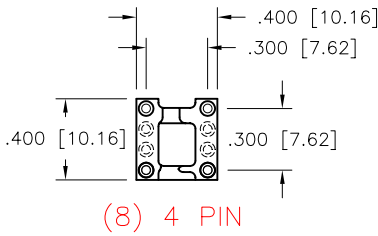
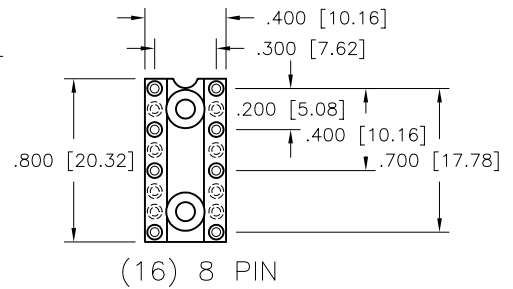
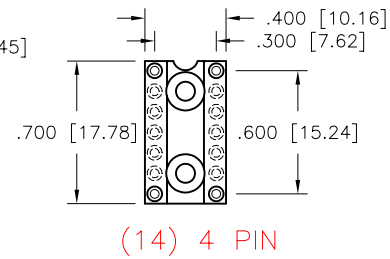
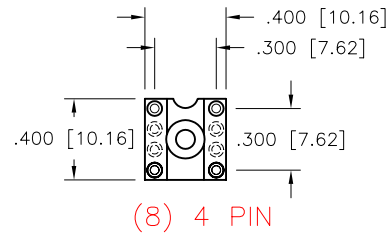


SERIES 108



-01

SERIES 208



CONTACT TYPE

S: STANDARD DIP	INSERTION FORCE	9.0 oz. AVG.
	WITHDRAWAL FORCE	2.0 oz. MIN.
M: STANDARD PGA	INSERTION FORCE	1.6 oz. MAX.
	WITHDRAWAL FORCE	0.5 oz. MIN.
L: INTERSTITIAL PGA	INSERTION FORCE	1.0 oz. MAX.
	WITHDRAWAL FORCE	0.3 oz. MIN.
H: HIGH FORCE	INSERTION FORCE	18.3 oz. MAX.
	WITHDRAWAL FORCE	4.2 oz. MIN.

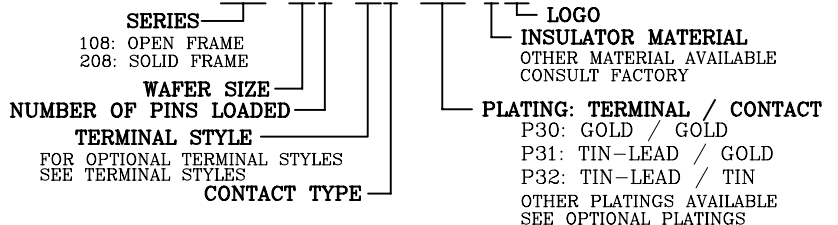
TECHNICAL SPECIFICATIONS

MATERIAL
INSULATOR GLASS FILLED POLYESTER
 UL 94V-0 LISTED
TERMINAL
CONTACT BRASS PER ASTM-B16
 BeCu PER ASTM-B194
OPERATING TEMP. -65°C TO +125°C

CONTACT FORCES
INSERTION STANDARD 9 oz. AVG.
WITHDRAWAL STANDARD 2 oz. MIN.

ORDERING INFORMATION

108-XXX-XXX-PXX-B12
 208-XXX-XXX-PXX-B10



CUSTOM SOCKETS AVAILABLE
 CONSULT FACTORY