

VOXTEL, INC.						
VOXTEL, INC. Model Number	Andon Part Number Replace "XXX" with Terminal Type	Terminal Type		Pin Ø [in]	Figure Number	Page Number
		Thru-Hole	Surface Mount			
VFC-1000 SERIES	R100-0404-02T-XXX-R27-L14	75S	265S	.018	2	1
VFP-1000 SERIES	R100-0404-02T-XXX-R27-L14	75S	265S	.018	2	1
PPE-1000 SERIES	R100-0404-02T-XXX-R27-L14	75S	265S	.018	2	1
TO-8 PACKAGE	R375-SP06-02T-XXX-R27-L14	75S	384S	.018	1	1
TO-8 PACKAGE, REV. C	R400-SP12-02T-XXX-R27-L14	01S	93S	.018	3	3
TO-8 PACKAGE, REV. F	R400-SP12-02T-XXX-R27-L14	01S	93S	.018	3	3
TO-46 PACKAGE	R100-0404-02T-XXX-R27-L14	75S	265S	.018	2	1
SQBF SERIES	R375-SP06-02T-XXX-R27-L14	75S	384S	.018	1	1

Heat sink socket available to reduce heat and noise. Contact Andon for details.

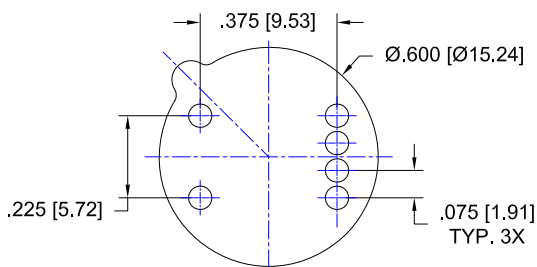


FIG: 1

Thru-Hole: R375-SP06-02T-75S-R27-L14
Surface Mount: R375-SP06-02T-384S-R27-L14

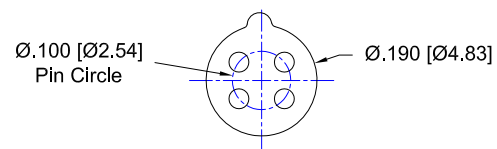


FIG: 2

Thru-Hole: R100-0404-02T-75S-R27-L14
Surface Mount: R100-0404-02T-265S-R27-L14

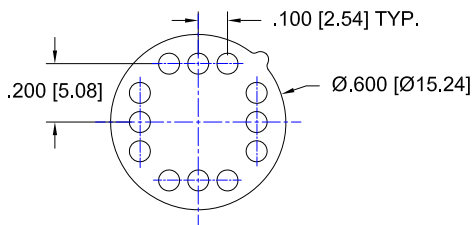


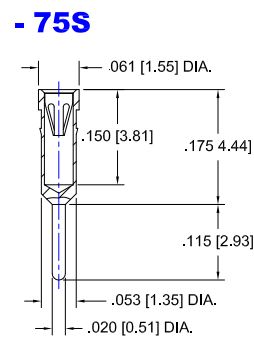
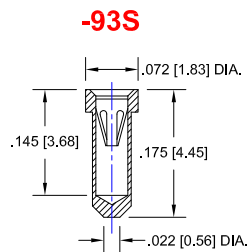
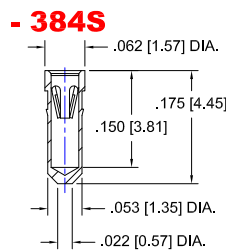
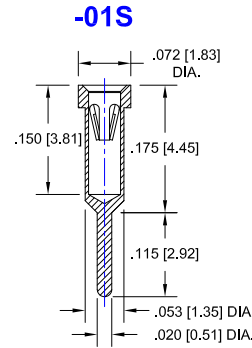
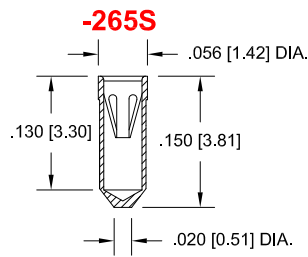
FIG: 3

Thru-Hole: R400-SP12-02T-01S-R27-L14
Surface Mount: R400-SP12-02T-93S-R27-L14

VOXTEL, INC. Continued

Top View Shown

Units: in [mm]



Material:

Insulator: Hi-Temp UL 94V-O
Terminal: Brass, per ASTM-B16
Contact: BeCu, Per ASTM-B194

Plating: RoHS COMPLIANT

R15 TERMINAL: GOLD / CONTACT: GOLD

R17 TERMINAL: TIN / CONTACT: GOLD

OTHER PLATINGS AVAILABLE

Terminal Acceptance and Forces

Thru Hole Terminals				Surface Mount Terminals			
Thru Hole Terminal	Accepts Pin Diameter	Insertion Force	Withdrawal Force	Surface Mount Terminal	Accepts Pin Diameter	Insertion Force	Withdrawal Force
-75S	Ø.018 [Ø0.46]	9.0 oz Avg.	2.0 oz Min	-384S	Ø.018 [Ø0.46]	9.0 oz Avg.	2.0 oz Min
-75S	Ø.018 [Ø0.46]	9.0 oz Avg.	2.0 oz Min	-265S	Ø.018 [Ø0.46]	9.0 oz Avg.	2.0 oz Min
-01S	Ø.018 [Ø0.46]	9.0 oz Avg.	2.0 oz Min	-93S	Ø.018 [Ø0.46]	9.0 oz Avg.	2.0 oz Min

MOUNTING OPTIONS

