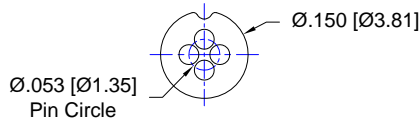


SUMITOMO ELECTRIC INDUSTRIES, LTD						
SUMITOMO ELECTRIC INDUSTRIES, LTD Model Number	Andon Part Number Replace "XXX" with Terminal Type	Terminal Type		Pin Ø [in]	Figure Number	Page Number
		Thru-Hole	Surface Mount			
SLT2270-XN SERIES	R053-0404-01T-XXX-R27-L14	400T4	414T4	.012	1	3
SLT2490-XN SERIES	R053-0404-01T-XXX-R27-L14	400T4	414T4	.012	1	3
SLT2480-XN SERIES	R053-0404-01T-XXX-R27-L14	400T4	414T4	.012	1	3
SLT2470-XN SERIES	R053-0404-01T-XXX-R27-L14	400T4	414T4	.012	1	3
SLT2420-XN SERIES	R053-0404-01T-XXX-R27-L14	400T4	414T4	.012	1	3
SLT2280-XN SERIES	R053-0404-01T-XXX-R27-L14	400T4	414T4	.012	1	3
SLT2220-XN SERIES	R053-0404-01T-XXX-R27-L14	400T4	414T4	.012	1	3
SLT2170-XN SERIES	R053-0404-01T-XXX-R27-L14	400T4	414T4	.012	1	3
SLT2110-XN SERIES	R053-0404-01T-XXX-R27-L14	400T4	414T4	.012	1	3
SLT2070-XN SERIES	R053-0404-01T-XXX-R27-L14	400T4	414T4	.012	1	3
SLT2000-XN SERIES	R053-0404-01T-XXX-R27-L14	400T4	414T4	.012	1	3
SLT4710 SLT4760 SERIES	R080-0404-01N-XXX-R27-L14	274K	281K	.018	2	3
SLT4410 SLT4460 SERIES	R080-0404-01N-XXX-R27-L14	274K	281K	.018	2	3
SLT4310 SLT4360 SERIES	R080-0404-01N-XXX-R27-L14	274K	281K	.018	2	3
SLT4310 SLT4260 SERIES	R080-0404-01N-XXX-R27-L14	274K	281K	.018	2	3
SLT4210 SLT4260 SERIES	R080-0404-01N-XXX-R27-L14	274K	281K	.018	2	3
SLT1130 SERIES	R080-0404-01N-XXX-R27-L14	274K	281K	.018	2	3
SLT1200 SERIES	R080-0404-01N-XXX-R27-L14	274K	281K	.018	2	3
SLT1230 SERIES	R080-0404-01N-XXX-R27-L14	274K	281K	.018	2	3
SLT1300 SERIES	R080-0404-01N-XXX-R27-L14	274K	281K	.018	2	3
SLT1330 SERIES	R080-0404-01N-XXX-R27-L14	274K	281K	.018	2	3
SLT1400 SERIES	R080-0404-01N-XXX-R27-L14	274K	281K	.018	2	3
SLT1430 SERIES	R080-0404-01N-XXX-R27-L14	274K	281K	.018	2	3
SLT1436 SERIES	R080-0404-01N-XXX-R27-L14	274K	281K	.018	2	3
SLT1730 SERIES	R080-0404-01N-XXX-R27-L14	274K	281K	.018	2	3
SLT1740 SERIES	R080-0404-01N-XXX-R27-L14	274K	281K	.018	2	3
STD3140	R080-0404-01N-XXX-R27-L14	274K	281K	.018	2	3
STD3150	R080-0404-01N-XXX-R27-L14	274K	281K	.018	2	3
STD3H40	R080-0404-01N-XXX-R27-L14	274K	281K	.018	2	3
STD3H50	R080-0404-01N-XXX-R27-L14	274K	281K	.018	2	3
STD3HE0	R080-0404-01N-XXX-R27-L14	274K	281K	.018	2	3
STD3Z40	R080-0404-01N-XXX-R27-L14	274K	281K	.018	2	3
STD3ZE0	R080-0404-01N-XXX-R27-L14	274K	281K	.018	2	3
STD5A86G12D	R080-0404-01N-XXX-R27-L14	274K	281K	.018	2	3
STD3H40-XNNX	R080-0404-01N-XXX-R27-L14	274K	281K	.018	2	3
STD3H50-XNNX	R080-0404-01N-XXX-R27-L14	274K	281K	.018	2	3
STD3H80-XNNX	R080-0404-01N-XXX-R27-L14	274K	281K	.018	2	3
SLT2110-X SERIES	R080-0404-01N-XXX-R27-L14	274K	281K	.018	2	3
SLT2710-X SERIES	R080-0404-01N-XXX-R27-L14	274K	281K	.018	2	3
SLT2000-X SERIES	R080-0404-01N-XXX-R27-L14	274K	281K	.018	2	3
SLT2880-0	R053-0404-01T-XXX-R27-L14	400T4	414T4	.012	1	3
SLT2880-6	R053-0404-01T-XXX-R27-L14	400T4	414T4	.012	1	3
SLT2880-9	R053-0404-01T-XXX-R27-L14	400T4	414T4	.012	1	3
SLT2770-0	R053-0404-01T-XXX-R27-L14	400T4	414T4	.012	1	3
SLT2770-6	R053-0404-01T-XXX-R27-L14	400T4	414T4	.012	1	3
SLT2770-9	R053-0404-01T-XXX-R27-L14	400T4	414T4	.012	1	3
SLT2490-0	R053-0404-01T-XXX-R27-L14	400T4	414T4	.012	1	3
SLT2490-6	R053-0404-01T-XXX-R27-L14	400T4	414T4	.012	1	3
SLT2490-9	R053-0404-01T-XXX-R27-L14	400T4	414T4	.012	1	3
SLT2480-0	R053-0404-01T-XXX-R27-L14	400T4	414T4	.012	1	3
SLT2480-6	R053-0404-01T-XXX-R27-L14	400T4	414T4	.012	1	3
SLT2480-9	R053-0404-01T-XXX-R27-L14	400T4	414T4	.012	1	3
SLT2470-0	R053-0404-01T-XXX-R27-L14	400T4	414T4	.012	1	3
SLT2470-6	R053-0404-01T-XXX-R27-L14	400T4	414T4	.012	1	3
SLT2470-9	R053-0404-01T-XXX-R27-L14	400T4	414T4	.012	1	3

SUMITOMO ELECTRIC INDUSTRIES LTD						
SUMITOMO ELECTRIC INDUSTRIES LTD Model Number	Andon Part Number Replace "XXX" with Terminal Type	Terminal Type		Pin Ø [in]	Figure Number	Page Number
		Thru-Hole	Surface Mount			
SLT2280-0	R053-0404-01T-XXX-R27-L14	400T4	414T4	.012	1	3
SLT2280-6	R053-0404-01T-XXX-R27-L14	400T4	414T4	.012	1	3
SLT2280-9	R053-0404-01T-XXX-R27-L14	400T4	414T4	.012	1	3
SLT2270-0	R053-0404-01T-XXX-R27-L14	400T4	414T4	.012	1	3
SLT2270-6	R053-0404-01T-XXX-R27-L14	400T4	414T4	.012	1	3
SLT2270-9	R053-0404-01T-XXX-R27-L14	400T4	414T4	.012	1	3
SLT2170-0	R053-0404-01T-XXX-R27-L14	400T4	414T4	.012	1	3
SLT2170-6	R053-0404-01T-XXX-R27-L14	400T4	414T4	.012	1	3
SLT2170-9	R053-0404-01T-XXX-R27-L14	400T4	414T4	.012	1	3
SLT2070-0	R053-0404-01T-XXX-R27-L14	400T4	414T4	.012	1	3
SLT2070-6	R053-0404-01T-XXX-R27-L14	400T4	414T4	.012	1	3
SLT2070-9	R053-0404-01T-XXX-R27-L14	400T4	414T4	.012	1	3
SLT3110 SERIES	R080-0404-01N-XXX-R27-L14	274K	281K	.018	2	3
SLT4100 SERIES	R080-0404-01N-XXX-R27-L14	274K	281K	.018	2	3
SLT3120 SERIES	R080-0404-01N-XXX-R27-L14	274K	281K	.018	2	3
SLT3000 SERIES	R080-0404-01N-XXX-R27-L14	274K	281K	.018	2	3
SLT4110 SERIES	R080-0404-01N-XXX-R27-L14	274K	281K	.018	2	3
SLT2420-0	R080-0404-01N-XXX-R27-L14	274K	281K	.018	2	3
SLT2420-6	R080-0404-01N-XXX-R27-L14	274K	281K	.018	2	3
SLT2420-9	R080-0404-01N-XXX-R27-L14	274K	281K	.018	2	3
SLT2220-0	R080-0404-01N-XXX-R27-L14	274K	281K	.018	2	3
SLT2220-6	R080-0404-01N-XXX-R27-L14	274K	281K	.018	2	3
SLT2220-9	R080-0404-01N-XXX-R27-L14	274K	281K	.018	2	3
SRD2141-LG1	R100-0404-03T-XXX-R27-L14	75S	265S	.018	3	3
HUW0526002-01A	R100-0404-03T-XXX-R27-L14	75S	265S	.018	3	3
SRD4141-CS1	R100-0404-03T-XXX-R27-L14	75S	265S	.018	3	3
SRD2511-LG1	R100-0404-03T-XXX-R27-L14	75S	265S	.018	3	3
SRD3201-LG3	R100-0404-03T-XXX-R27-L14	75S	265S	.018	3	3
SPT3900 SERIES	R080-0404-01N-XXX-R27-L14	274K	281K	.018	2	3
SPT3400 SERIES	R080-0404-01N-XXX-R27-L14	274K	281K	.018	2	3
F08524917	R100-0404-02T-XXX-R27-L14	75S	265S	.018	4	3
F0831251T	R100-0404-02T-XXX-R27-L14	75S	265S	.018	4	3
F08612151T	R100-0404-02T-XXX-R27-L14	75S	265S	.018	4	3
F08612153T	R100-0404-02T-XXX-R27-L14	75S	265S	.018	4	3
F08612151T	R100-0404-02T-XXX-R27-L14	75S	265S	.018	4	3
F08612153T	R100-0404-02T-XXX-R27-L14	75S	265S	.018	4	3
F0812484T	R100-0404-02T-XXX-R27-L14	75S	265S	.018	4	3
F0831251T	R100-0404-02T-XXX-R27-L14	75S	265S	.018	4	3
F0832483R-41L	R100-0404-02T-XXX-R27-L14	75S	265S	.018	4	3
F0862482R-41L	R100-0404-02T-XXX-R27-L14	75S	265S	.018	4	3
TS-S970016A	C10-624-24-01-XXX-R27-L14	01S	93S	.018	5	3
TS-S94D009C	C10-624-24-01-XXX-R27-L14	01S	93S	.018	5	3
TS-S01D058B	C10-624-24-01-XXX-R27-L14	01S	93S	.018	5	3
TS-S97D022A	C10-009-09-01-XXX-R27-L14	01S	93S	.018	6	3

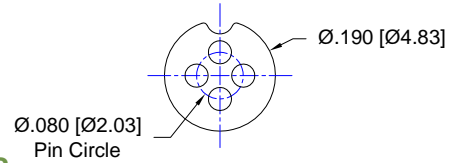
**SUMITOMO ELECTRIC INDUSTRIES, LTD Continued**

**Socket Terminal Details**  
Cross Section View Shown Units: in [mm]



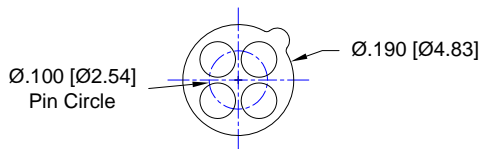
**FIG: 1**

**Thru-Hole:** R053-0404-01T-400T4-R27-L14  
**Surface Mount:** R053-0404-01T-414T4-R27-L14



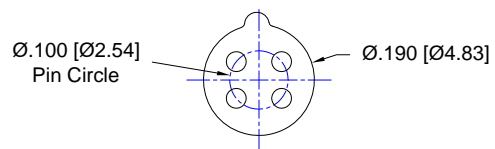
**FIG: 2**

**Thru-Hole:** R080-0404-01N-274K-R27-L14  
**Surface Mount:** R080-0404-01N-281K-R27-L14



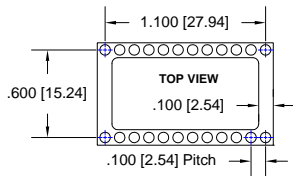
**FIG: 3**

**Thru-Hole:** R100-0404-03T-75S-R27-L14  
**Surface Mount:** R100-0404-03T-265S-R27-L14



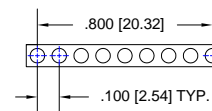
**FIG: 4**

**Thru-Hole:** R100-0404-02T-75S-R27-L14  
**Surface Mount:** R100-0404-02T-265S-R27-L14



**FIG: 5**

**Thru-Hole:** C10-624-24-01-01S-R27-L14  
**Surface Mount:** C10-624-24-01-93S-R27-L14

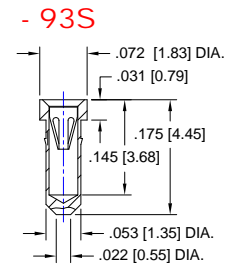
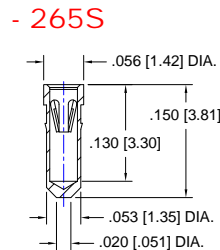
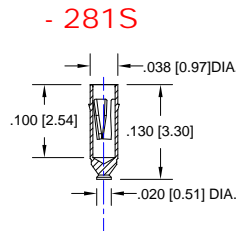
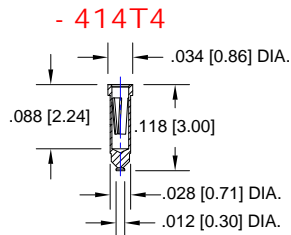
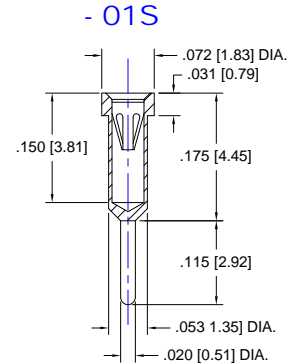
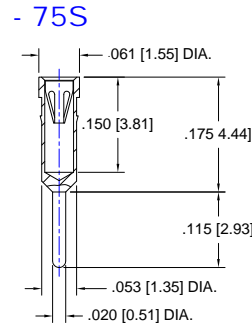
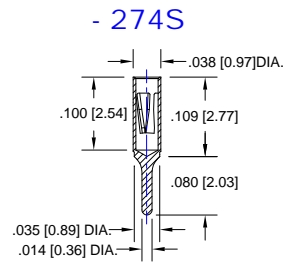
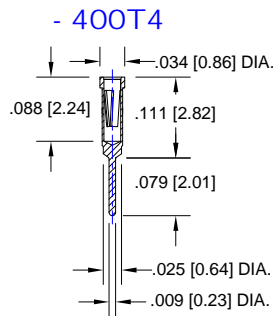


**FIG: 6**

**Thru-Hole:** C10-009-09-01-01S-R27-L14  
**Surface Mount:** C10-009-09-01-93S-R27-L14

## SUMITOMO ELECTRIC INDUSTRIES, LTD *Continued*

### Socket Terminal Details Cross Section View Shown Units: in [mm]



## Technical Information

### Material:

Insulator: Hi-Temp UL 94V-0  
Terminal: Brass, per ASTM-B16  
Contact: BeCu, Per ASTM-B194

### Plating: RoHS COMPLIANT

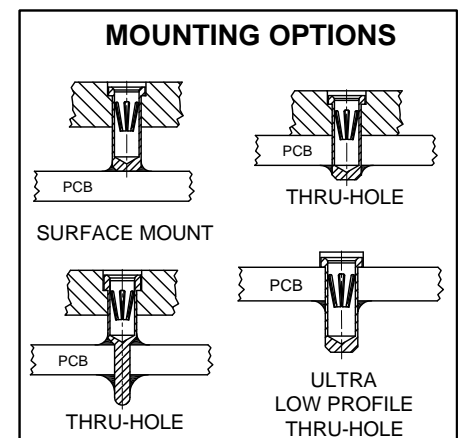
**R15 TERMINAL: GOLD / CONTACT: GOLD**

**R17 TERMINAL: TIN / CONTACT: GOLD**

**OTHER PLATINGS AVAILABLE**

### Terminal Acceptance and Forces

Thru Hole Terminals				Surface Mount Terminals			
Thru Hole Terminal	Accepts Pin Diameter	Insertion Force	Withdrawal Force	Surface Mount Terminal	Accepts Pin Diameter	Insertion Force	Withdrawal Force
-01S	Ø.018 [Ø0.46]	9.0 oz Avg.	2.0 oz Min	-93S	Ø.018 [Ø0.46]	9.0 oz Avg.	2.0 oz Min
-75S	Ø.018 [Ø0.46]	9.0 oz Max	2.0 oz Min	-265S	Ø.018 [Ø0.46]	9.0 oz Max	2.0 oz Min
-400T4	Ø.012 [Ø0.30]	1.1 oz Max	0.3 oz Min	-414T4	Ø.012 [Ø0.30]	1.1 oz Max	0.3 oz Min
-274K	Ø.018 [Ø0.46]	1.24 oz Max	0.5 oz Min	-281K	Ø.018 [Ø0.46]	1.24 oz Max	0.5 oz Min



**"ANDON PROPRIETARY INFORMATION"**

**RoHS Compliant**

©Copyright 2015 Andon Electronics Corporation. All Rights Reserved. This material is protected under US and other copyrights and may not be copied, sold, or redistributed in any form without written permission of Andon Electronics Corporation. Copyrights and trademarks are property of their respective companies. We reserve the right to change specifications without notice.

Andon makes no warranty, expressed or implied, as to the suitability of the sockets for the intended purpose.

\*Sockets are not drawn to scale SUMITOMO ELECTRIC INDUSTRIES, LTD 02/20/2015