



## ***High-Reliability Gas Sensor Sockets for Semea Tech Inc.***



***Featuring Andon's Unique Senstac<sup>TM</sup> Contact***

Semea Tech						
Semea Part Number	Andon Part Number Replace "XXX" With terminal Type	Terminal Type		Pin Ø [in]	Figure Number	Page Number
		Thru-Hole	Surface Mount			
051-0100-000	R530-0403-01T-XXX-R27-L14	436P55	440P55	0.062	1	5
051-0200-000	R670-0804-01T-XXX-R27-L14	433E	285E	0.040	2	5
051-0400-000	R530-0403-01T-XXX-R27-L14	436P55	440P55	0.062	1	5
051-0600-000	R670-0804-01T-XXX-R27-L14	433E	285E	0.040	2	5
051-0700-000	R670-0804-01T-XXX-R27-L14	433E	285E	0.040	2	5
051-0800-000	R530-0403-01T-XXX-R27-L14	436P55	440P55	0.062	1	5
051-0900-000	R530-0403-01T-XXX-R27-L14	436P55	440P55	0.062	1	5
051-1000-000	R530-0403-01T-XXX-R27-L14	436P55	440P55	0.062	1	5
051-1100-000	R530-0403-01T-XXX-R27-L14	436P55	440P55	0.062	1	5
051-1200-000	R530-0403-01T-XXX-R27-L14	436P55	440P55	0.062	1	5
051-1300-000	R670-0804-01T-XXX-R27-L14	433E	285E	0.040	2	5
051-1400-000	R670-0804-01T-XXX-R27-L14	433E	285E	0.040	2	5
051-1600-000	R530-0403-01T-XXX-R27-L14	436P55	440P55	0.062	1	5
051-2000-000	R530-0403-01T-XXX-R27-L14	436P55	440P55	0.062	1	5
051-3000-000	R1355-SP03-01N-XXX-R27-L14	433E	285E	0.040	3	6
051-3000-100	R1355-SP03-01N-XXX-R27-L14	433E	285E	0.040	3	6
051-3100-000	R1355-SP03-01N-XXX-R27-L14	433E	285E	0.040	3	6
051-3200-000	R1355-SP03-01N-XXX-R27-L14	433E	285E	0.040	3	6
051-5000-000	R250-SP03-01T-XXX-R27-L14	295V	439V	0.030	6	6
052-0000-000	R530-0403-01T-XXX-R27-L14	436P55	440P55	0.062	1	5
052-0100-000	R530-0403-01T-XXX-R27-L14	436P55	440P55	0.062	1	5
052-0200-000	R670-0804-01T-XXX-R27-L14	433E	285E	0.040	2	5
052-0300-000	R670-0804-01T-XXX-R27-L14	433E	285E	0.040	2	5
052-0400-000	R530-0403-01T-XXX-R27-L14	436P55	440P55	0.062	1	5
052-0500-000	R670-0804-01T-XXX-R27-L14	433E	285E	0.040	2	5
052-0600-000	R530-0403-01T-XXX-R27-L14	436P55	440P55	0.062	1	5
052-0700-000	R530-0403-01T-XXX-R27-L14	436P55	440P55	0.062	1	5
052-0800-000	R670-0804-01T-XXX-R27-L14	433E	285E	0.040	2	5
052-0900-000	R670-0804-01T-XXX-R27-L14	433E	285E	0.040	2	5
052-1100-000	R670-0804-01T-XXX-R27-L14	433E	285E	0.040	2	5
052-1300-000	R670-0804-01T-XXX-R27-L14	433E	285E	0.040	2	5
052-1400-000	R670-0804-01T-XXX-R27-L14	433E	285E	0.040	2	5
052-1500-000	R530-0403-01T-XXX-R27-L14	436P55	440P55	0.062	1	5
052-2000-000	R530-0403-01T-XXX-R27-L14	436P55	440P55	0.062	1	5
052-2100-000	R670-0804-01T-XXX-R27-L14	433E	285E	0.040	2	5
052-S100-000	R530-0403-01T-XXX-R27-L14	436P55	440P55	0.062	1	5
053-0000-000	R530-0403-01T-XXX-R27-L14	436P55	440P55	0.062	1	5
054-0000-000	R530-0403-01T-XXX-R27-L14	436P55	440P55	0.062	1	5
054-000A-000	R530-0403-01T-XXX-R27-L14	436P55	440P55	0.062	1	5
054-0100-000	R530-0403-01T-XXX-R27-L14	436P55	440P55	0.062	1	5
054-010A-000	R530-0403-01T-XXX-R27-L14	436P55	440P55	0.062	1	5
054-0200-000	R670-0804-01T-XXX-R27-L14	433E	285E	0.040	2	5
054-0300-000	R670-0804-01T-XXX-R27-L14	433E	285E	0.040	2	5
054-0400-000	R530-0403-01T-XXX-R27-L14	436P55	440P55	0.062	1	5
054-040A-000	R530-0403-01T-XXX-R27-L14	436P55	440P55	0.062	1	5
054-0500-000	R670-0804-01T-XXX-R27-L14	433E	285E	0.040	2	5
055-0000-000	R530-0403-01T-XXX-R27-L14	436P55	440P55	0.062	1	5

Heat sink socket available to reduce heat and noise. Contact Andon for details.

Semea Tech						
Semea Part Number	Andon Part Number Replace "XXX" With terminal Type	Terminal Type		Pin Ø [in]	Figure Number	Page Number
		Thru-Hole	Surface Mount			
055-0100-000	R530-0403-01T-XXX-R27-L14	436P55	440P55	0.062	1	5
055-0200-000	R530-0403-01T-XXX-R27-L14	436P55	440P55	0.062	1	5
055-0300-000	R670-0804-01T-XXX-R27-L14	433E	285E	0.040	2	5
055-0400-000	R670-0804-01T-XXX-R27-L14	433E	285E	0.040	2	5
056-0000-000	R530-0403-01T-XXX-R27-L14	436P55	440P55	0.062	1	5
056-000A-000	R530-0403-01T-XXX-R27-L14	436P55	440P55	0.062	1	5
056-0100-000	R530-0403-01T-XXX-R27-L14	436P55	440P55	0.062	1	5
056-010A-000	R530-0403-01T-XXX-R27-L14	436P55	440P55	0.062	1	5
056-0200-000	R670-0804-01T-XXX-R27-L14	433E	285E	0.040	2	5
056-020A-000	R670-0804-01T-XXX-R27-L14	433E	285E	0.040	2	5
056-0300-000	R670-0804-01T-XXX-R27-L14	433E	285E	0.040	2	5
056-0400-000	R530-0403-01T-XXX-R27-L14	436P55	440P55	0.062	1	5
056-040A-000	R530-0403-01T-XXX-R27-L14	436P55	440P55	0.062	1	5
056-0500-000	R530-0403-01T-XXX-R27-L14	436P55	440P55	0.062	1	5
056-050A-000	R530-0403-01T-XXX-R27-L14	436P55	440P55	0.062	1	5
056-0600-000	R670-0804-01T-XXX-R27-L14	433E	285E	0.040	2	5
056-060A-000	R670-0804-01T-XXX-R27-L14	433E	285E	0.040	2	5
056-0700-000	R670-0804-01T-XXX-R27-L14	433E	285E	0.040	2	5
056-070A-000	R670-0804-01T-XXX-R27-L14	433E	285E	0.040	2	5
056-0900-000	R530-0403-01T-XXX-R27-L14	436P55	440P55	0.062	1	5
056-1000-000	R530-0403-01T-XXX-R27-L14	436P55	440P55	0.062	1	5
056-1100-000	R670-0804-01T-XXX-R27-L14	433E	285E	0.040	2	5
056-1200-000	R670-0804-01T-XXX-R27-L14	433E	285E	0.040	2	5
056-3000-000	R1355-SP03-01N-XXX-R27-L14	433E	285E	0.040	3	6
056-3000-000	R1355-SP03-01N-XXX-R27-L14	433E	285E	0.040	3	6
056-3000-100	R1355-SP03-01N-XXX-R27-L14	433E	285E	0.040	3	6
056-3100-000	R1355-SP03-01N-XXX-R27-L14	433E	285E	0.040	3	6
056-6000-000	R530-0403-01T-XXX-R27-L14	436P55	440P55	0.062	1	5
057-0000-000	R530-0403-01T-XXX-R27-L14	436P55	440P55	0.062	1	5
057-0100-000	R530-0403-01T-XXX-R27-L14	436P55	440P55	0.062	1	5
057-0200-000	R670-0804-01T-XXX-R27-L14	433E	285E	0.040	2	5
057-0300-000	R530-0403-01T-XXX-R27-L14	436P55	440P55	0.062	1	5
057-0400-000	R670-0804-01T-XXX-R27-L14	433E	285E	0.040	2	5
057-0500-000	R670-0804-01T-XXX-R27-L14	433E	285E	0.040	2	5
057-0600-000	R670-0804-01T-XXX-R27-L14	433E	285E	0.040	2	5
057-0700-000	R530-0403-01T-XXX-R27-L14	436P55	440P55	0.062	1	5
057-0800-000	R530-0403-01T-XXX-R27-L14	436P55	440P55	0.062	1	5
057-3000-000	R1355-SP03-01N-XXX-R27-L14	433E	285E	0.040	3	6
057-3000-100	R1355-SP03-01N-XXX-R27-L14	433E	285E	0.040	3	6
058-0000-000	R530-0403-01T-XXX-R27-L14	436P55	440P55	0.062	1	5
058-000A-000	R530-0403-01T-XXX-R27-L14	436P55	440P55	0.062	1	5
058-0100-000	R530-0403-01T-XXX-R27-L14	436P55	440P55	0.062	1	5
058-0200-000	R670-0804-01T-XXX-R27-L14	433E	285E	0.040	2	5
058-020A-000	R670-0804-01T-XXX-R27-L14	433E	285E	0.040	2	5
058-0300-000	R530-0403-01T-XXX-R27-L14	436P55	440P55	0.062	1	5
058-3000-000	R1355-SP03-01N-XXX-R27-L14	433E	285E	0.040	3	6
058-5000-000	R530-0403-01T-XXX-R27-L14	436P55	440P55	0.062	1	5

Semea Tech						
Semea Part Number	Andon Part Number Replace "XXX" With terminal Type	Terminal Type		Pin Ø [in]	Figure Number	Page Number
		Thru-Hole	Surface Mount			
058-S100-000	R530-0403-01T-XXX-R27-L14	436P55	440P55	0.062	1	5
059-0600-000	R530-0403-01T-XXX-R27-L14	436P55	440P55	0.062	1	5
059-060A-000	R530-0403-01T-XXX-R27-L14	436P55	440P55	0.062	1	5
059-1000-000	R670-0804-01T-XXX-R27-L14	433E	285E	0.040	2	5
059-1100-000	R530-0403-01T-XXX-R27-L14	436P55	440P55	0.062	1	5
059-1200-000	R530-0403-01T-XXX-R27-L14	436P55	440P55	0.062	1	5
059-1300-000	R530-0403-01T-XXX-R27-L14	436P55	440P55	0.062	1	5
059-1500-000	R530-0403-01T-XXX-R27-L14	436P55	440P55	0.062	1	5
059-1600-000	R670-0804-01T-XXX-R27-L14	433E	285E	0.040	2	5
059-1700-000	R670-0804-01T-XXX-R27-L14	433E	285E	0.040	2	5
059-1900-000	R530-0403-01T-XXX-R27-L14	436P55	440P55	0.062	1	5
059-2000-000	R530-0403-01T-XXX-R27-L14	436P55	440P55	0.062	1	5
059-2100-000	R530-0403-01T-XXX-R27-L14	436P55	440P55	0.062	1	5
059-2200-000	R530-0403-01T-XXX-R27-L14	436P55	440P55	0.062	1	5
059-2300-000	R670-0804-01T-XXX-R27-L14	433E	285E	0.040	2	5
059-2400-000	R670-0804-01T-XXX-R27-L14	433E	285E	0.040	2	5
059-2500-000	R670-0804-01T-XXX-R27-L14	433E	285E	0.040	2	5
059-260A-000	R670-0804-01T-XXX-R27-L14	433E	285E	0.040	2	5
059-2700-000	R670-0804-01T-XXX-R27-L14	433E	285E	0.040	2	5
059-2800-000	R670-0804-01T-XXX-R27-L14	433E	285E	0.040	2	5
059-3200-000	R670-0804-01T-XXX-R27-L14	433E	285E	0.040	2	5
059-3300-000	R530-0403-01T-XXX-R27-L14	436P55	440P55	0.062	1	5
059-5100-001	R250-SP03-01T-XXX-R27-L15	295V	439V	0.030	6	6
060-0000-000	R530-0403-01T-XXX-R27-L14	436P55	440P55	0.062	1	5
060-0100-000	R530-0403-01T-XXX-R27-L14	436P55	440P55	0.062	1	5
060-0200-000	R670-0804-01T-XXX-R27-L14	433E	285E	0.040	2	5
060-0300-000	R670-0804-01T-XXX-R27-L14	433E	285E	0.040	2	5
060-0400-000	R530-0403-01T-XXX-R27-L14	436P55	440P55	0.062	1	5
060-0600-000	R530-0403-01T-XXX-R27-L14	436P55	440P55	0.062	1	5
060-100A-000	R530-0403-01T-XXX-R27-L14	436P55	440P55	0.062	1	5
060-110A-000	R530-0403-01T-XXX-R27-L14	436P55	440P55	0.062	1	5
061-0000-000	R530-0403-01T-XXX-R27-L14	436P55	440P55	0.062	1	5
061-0100-000	R530-0403-01T-XXX-R27-L14	436P55	440P55	0.062	1	5
061-0200-000	R670-0804-01T-XXX-R27-L14	433E	285E	0.040	2	5
061-0300-000	R670-0804-01T-XXX-R27-L14	433E	285E	0.040	2	5
061-0400-000	R530-0403-01T-XXX-R27-L14	436P55	440P55	0.062	1	5
062-0000-000	R530-0403-01T-XXX-R27-L14	436P55	440P55	0.062	1	5
062-0100-000	R530-0403-01T-XXX-R27-L14	436P55	440P55	0.062	1	5
062-0200-000	R530-0403-01T-XXX-R27-L14	436P55	440P55	0.062	1	5
062-0300-000	R670-0804-01T-XXX-R27-L14	433E	285E	0.040	2	5
062-0400-000	R670-0804-01T-XXX-R27-L14	433E	285E	0.040	2	5
062-0600-000	R530-0403-01T-XXX-R27-L14	436P55	440P55	0.062	1	5
063-0000-000	R530-0403-01T-XXX-R27-L14	436P55	440P55	0.062	1	5
063-0100-000	R670-0804-01T-XXX-R27-L14	433E	285E	0.040	2	5
063-0200-000	R530-0403-01T-XXX-R27-L14	436P55	440P55	0.062	1	5
063-0300-000	R670-0804-01T-XXX-R27-L14	433E	285E	0.040	2	5
063-0400-000	R670-0804-01T-XXX-R27-L14	433E	285E	0.040	2	5

Semea Tech						
Semea Part Number	Andon Part Number Replace "XXX" With terminal Type	Terminal Type		Pin Ø [in]	Figure Number	Page Number
		Thru-Hole	Surface Mount			
063-0500-000	R530-0403-01T-XXX-R27-L14	436P55	440P55	0.062	1	5
063-0600-000	R530-0403-01T-XXX-R27-L14	436P55	440P55	0.062	1	5
064-1000-000	R530-0403-01T-XXX-R27-L14	436P55	440P55	0.062	1	5
064-1100-000	R530-0403-01T-XXX-R27-L14	436P55	440P55	0.062	1	5
064-1200-000	R670-0804-01T-XXX-R27-L14	433E	285E	0.040	2	5
065-0000-000	R530-0403-01T-XXX-R27-L14	436P55	440P55	0.062	1	5
065-0100-000	R670-0804-01T-XXX-R27-L14	433E	285E	0.040	2	5
066-0000-000	R530-0403-01T-XXX-R27-L14	436P55	440P55	0.062	1	5
066-0100-000	R670-0804-01T-XXX-R27-L14	433E	285E	0.040	2	5
067-0000-000	R530-0403-01T-XXX-R27-L14	436P55	440P55	0.062	1	5
067-0100-000	R670-0804-01T-XXX-R27-L14	433E	285E	0.040	2	5
067-0200-000	R530-0403-01T-XXX-R27-L14	436P55	440P55	0.062	1	5
067-0200-000	R530-0403-01T-XXX-R27-L14	436P55	440P55	0.062	1	5
067-0300-000	R670-0804-01T-XXX-R27-L14	433E	285E	0.040	2	5
068-0000-000	R530-0403-01T-XXX-R27-L14	436P55	440P55	0.062	1	5
068-0100-000	R530-0403-01T-XXX-R27-L14	436P55	440P55	0.062	1	5
068-0200-000	R670-0804-01T-XXX-R27-L14	433E	285E	0.040	2	5
068-0300-000	R670-0804-01T-XXX-R27-L14	433E	285E	0.040	2	5
068-0400-000	R530-0403-01T-XXX-R27-L14	436P55	440P55	0.062	1	5
068-0500-000	R670-0804-01T-XXX-R27-L14	433E	285E	0.040	2	5
068-0800-000	R530-0403-01T-XXX-R27-L14	436P55	440P55	0.062	1	5
069-0000-000	R530-0403-01T-XXX-R27-L14	436P55	440P55	0.062	1	5
069-0100-000	R530-0403-01T-XXX-R27-L14	436P55	440P55	0.062	1	5
069-0200-000	R670-0804-01T-XXX-R27-L14	433E	285E	0.040	2	5
069-0300-000	R670-0804-01T-XXX-R27-L14	433E	285E	0.040	2	5
071-0100-000	R530-0403-01T-XXX-R27-L14	436P55	440P55	0.062	1	5
072-0000-000	R530-0403-01T-XXX-R27-L14	436P55	440P55	0.062	1	5
072-0100-000	R530-0403-01T-XXX-R27-L14	436P55	440P55	0.062	1	5
072-0200-000	R670-0804-01T-XXX-R27-L14	433E	285E	0.040	2	5
072-0300-000	R670-0804-01T-XXX-R27-L14	433E	285E	0.040	2	5
075-0000-000	R530-0403-01T-XXX-R27-L14	436P55	440P55	0.062	1	5
075-0100-000	R530-0403-01T-XXX-R27-L14	436P55	440P55	0.062	1	5
075-0200-000	R530-0403-01T-XXX-R27-L14	436P55	440P55	0.062	1	5
076-0000-000	R530-0403-01T-XXX-R27-L14	436P55	440P55	0.062	1	5
076-0100-000	R530-0403-01T-XXX-R27-L14	436P55	440P55	0.062	1	5
076-0200-000	R530-0403-01T-XXX-R27-L14	436P55	440P55	0.062	1	5
077-0000-000	R530-0403-01T-XXX-R27-L14	436P55	440P55	0.062	1	5
078-0000-000	R530-0403-01T-XXX-R27-L14	436P55	440P55	0.062	1	5
078-0100-000	R530-0403-01T-XXX-R27-L14	436P55	440P55	0.062	1	5
079-0000-000	R530-0403-01T-XXX-R27-L14	436P55	440P55	0.062	1	5
079-0100-000	R530-0403-01T-XXX-R27-L14	436P55	440P55	0.062	1	5
080-0000-000	R530-0403-01T-XXX-R27-L14	436P55	440P55	0.062	1	5
090-5000-000	R230-0404-03T-XXX-R27-L14	295V	439V	0.030	7	7
090-R000-000	R300-SP03-02T-XXX-R27-L14	436P55	440P55	0.062	8	7
096-0100-000	R420-SP05-04T-XXX-R27-L14	436P55	440P55	0.062	9	7
4ECM-SMART	R670-SP05-01T-XXX-R27-L14	01S	93S	0.018	5	6
4LEL-D-2.5/3.0	R300-SP03-02T-XXX-R27-L14	436P55	440P55	0.062	11	7

Semea Tech						
Semea Part Number	Andon Part Number Replace "XXX" With terminal Type	Terminal Type		Pin Ø [in]	Figure Number	Page Number
		Thru-Hole	Surface Mount			
4LEL-H-2.0	R300-SP03-02T-XXX-R27-L14	436P55	440P55	0.062	11	7
4LEL-SMART	R670-SP05-01T-XXX-R27-L15	01S	93S	0.018	5	6
7ECM-SMART	R590-SP07-01T-XXX-R27-L14	433E	285E	0.040	10	7
7-SMART	R1000-SP11-01T-XXX-R27-L14	01S	93S	0.018	4	6
PID-106K-0050	R300-SP03-02T-XXX-R27-L14	436P55	440P55	0.062	8	7
PID-106K-0100	R300-SP03-02T-XXX-R27-L14	436P55	440P55	0.062	8	7
PID-106K-0200	R300-SP03-02T-XXX-R27-L14	436P55	440P55	0.062	8	7
PID-106K-1000	R300-SP03-02T-XXX-R27-L14	436P55	440P55	0.062	8	7
PID-106K-1001	R300-SP03-02T-XXX-R27-L14	436P55	440P55	0.062	8	7
PID-106K-1002	R300-SP03-02T-XXX-R27-L14	436P55	440P55	0.062	8	7
PID-106K-2000	R300-SP03-02T-XXX-R27-L14	436P55	440P55	0.062	8	7
PID-106K-5001	R300-SP03-02T-XXX-R27-L14	436P55	440P55	0.062	8	7
Pid-106S-0050	R300-SP03-02T-XXX-R27-L14	436P55	440P55	0.062	8	7
Pid-106S-0100	R300-SP03-02T-XXX-R27-L14	436P55	440P55	0.062	8	7
PID-106S-0500	R300-SP03-02T-XXX-R27-L14	436P55	440P55	0.062	8	7
PID-106S-1000	R300-SP03-02T-XXX-R27-L14	436P55	440P55	0.062	8	7
PID-106S-1002	R300-SP03-02T-XXX-R27-L14	436P55	440P55	0.062	8	7
PID-106S-2000	R300-SP03-02T-XXX-R27-L14	436P55	440P55	0.062	8	7
PID-106S-2001	R300-SP03-02T-XXX-R27-L14	436P55	440P55	0.062	8	7
PID-106S-5001	R300-SP03-02T-XXX-R27-L14	436P55	440P55	0.062	8	7

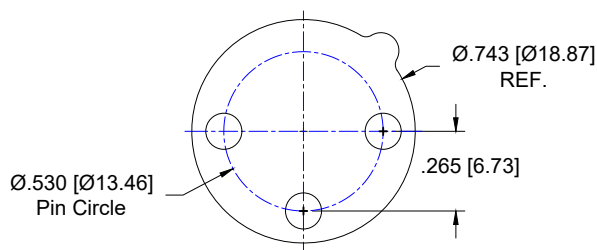


FIG: 1

Thru-Hole: R530-0403-01T-**436P55**-R27-L14  
Surface Mount: R530-0403-01T-**440P55**-R27-L14

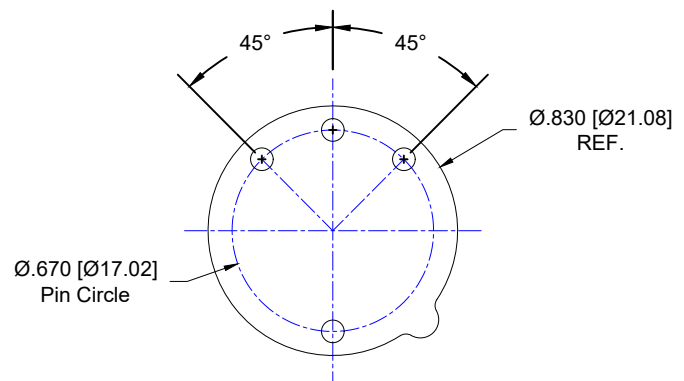
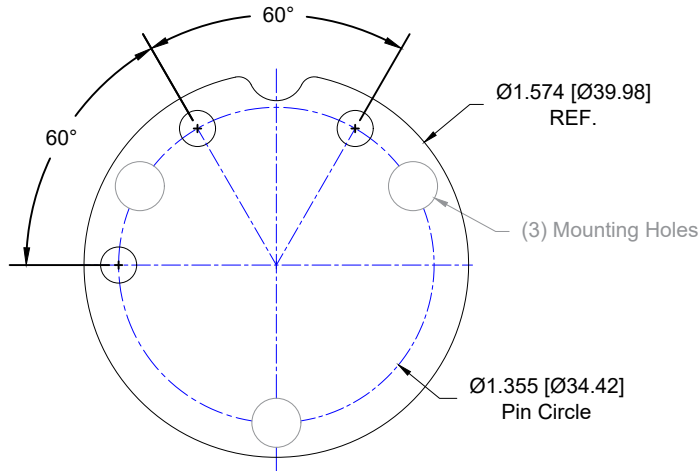


FIG: 2

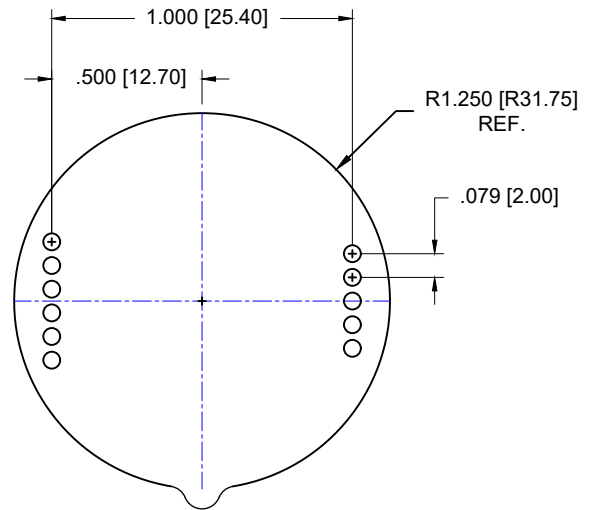
Thru-Hole: R670-0804-01T-**433E**-R27-L14  
Surface Mount: R670-0804-01T-**285E**-R27-L14

**Top View Shown**  
Units: in [mm]



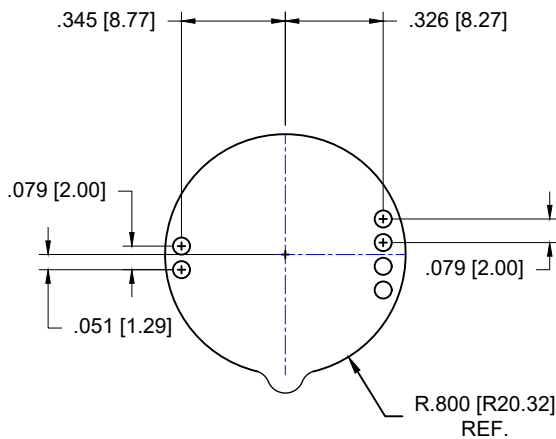
**FIG: 3**

**Thru-Hole:** R1355-SP03-01N-433E-R27-L14  
**Surface Mount:** R1355-SP03-01N-285E-R27-L14



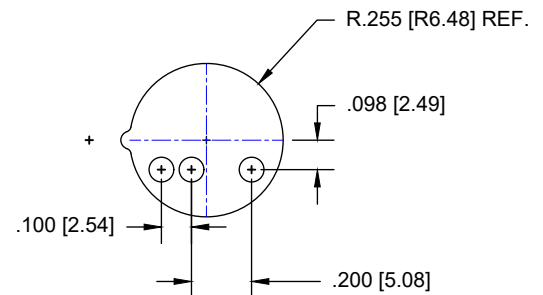
**FIG: 4**

**Thru-Hole:** R1000-SP11-01T-01S-R27-L14  
**Surface Mount:** R1000-SP11-01T-93S-R27-L14



**FIG: 5**

**Thru-Hole:** R670-SP05-01T-01S-R27-L14  
**Surface Mount:** R670-SP05-01T-93S-R27-L14



**Thru-Hole:** R250-SP03-01T-295V-R27-L14  
**Surface Mount:** R250-SP03-01T-439V-R27-L14

## Top View Shown Units: in [mm]

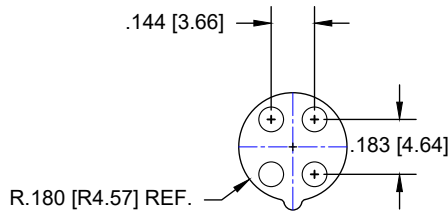


FIG: 7

Thru-Hole: R230-0404-03T-**295V**-R27-L14  
Surface Mount: R230-0404-03T-**439V**-R27-L14

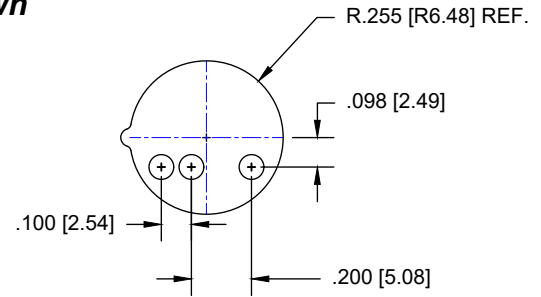


FIG: 8

Thru-Hole: R300-SP03-01T-**295V**-R27-L14  
Surface Mount: R300-SP03-01T-**439V**-R27-L14

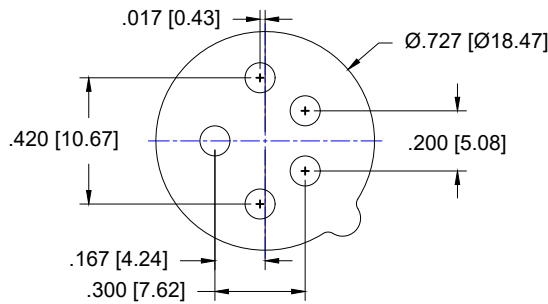


FIG: 9

Thru-Hole: R420-SP05-04T-**436P55**-R27-L14  
Surface Mount: R420-SP05-04T-**440P55**-R27-L14

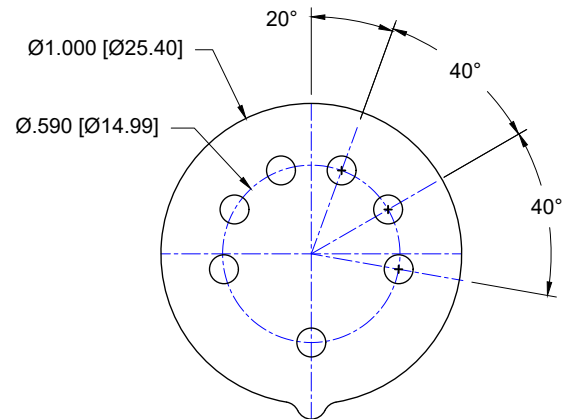


FIG: 10

Thru-Hole: R590-SP07-01T-**433E**-R27-L14  
Surface Mount: R590-SP07-01T-**285E**-R27-L14

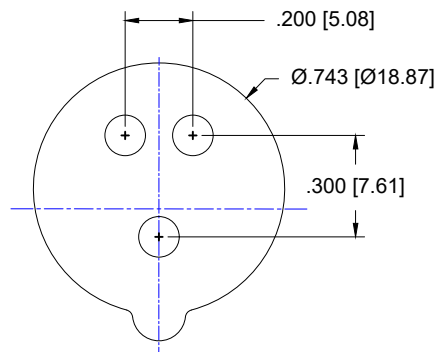
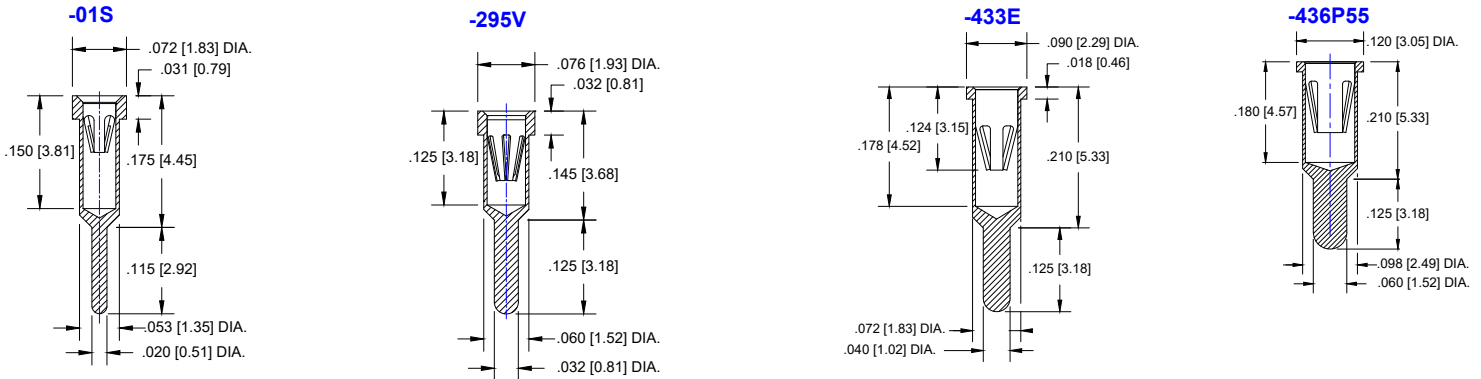


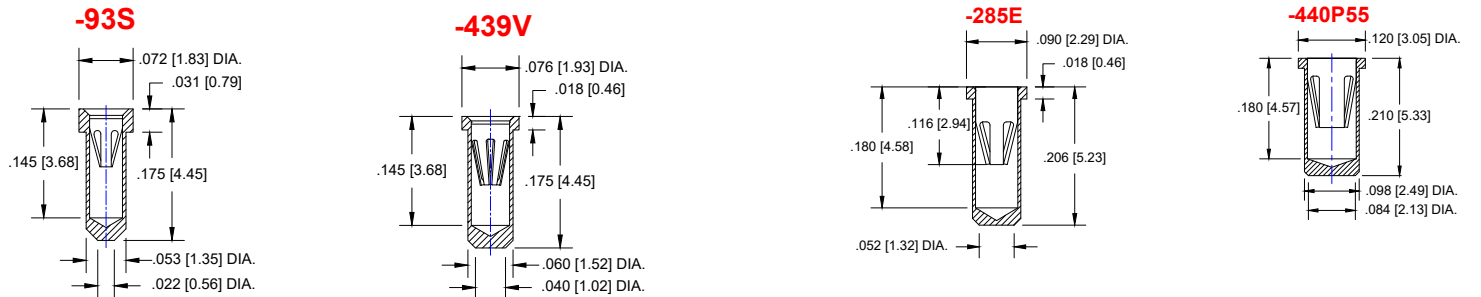
FIG: 11

Thru-Hole: R300-SP03-01T-**436P55**-R27-L14  
Surface Mount: R300-SP03-01T-**440P55**-R27-L14

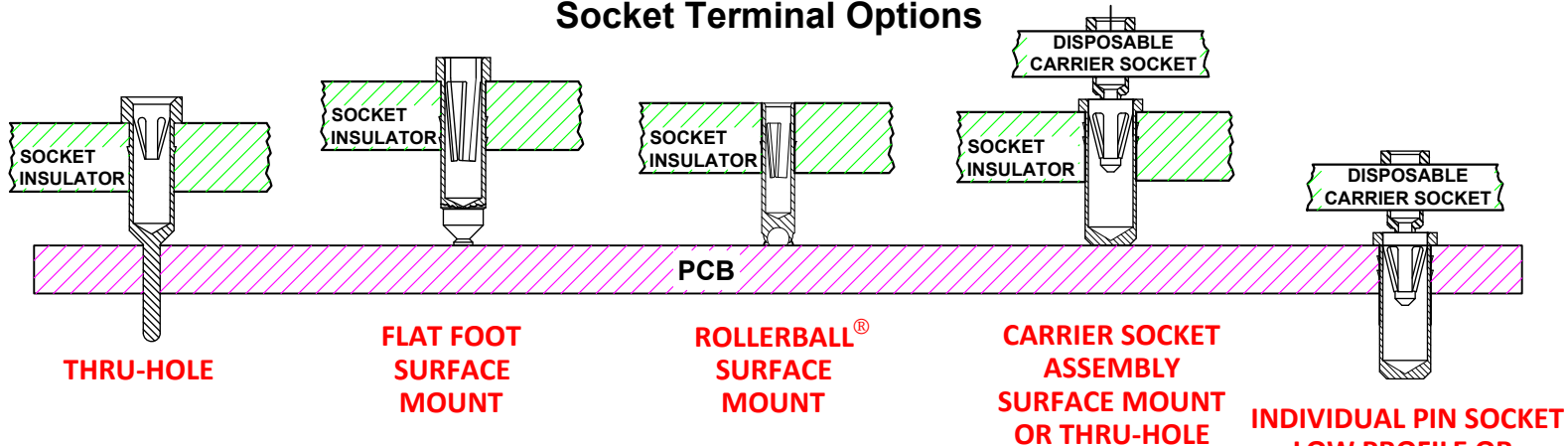
## THRU HOLE OPTION



## SURFACE MOUNT OPTION



## Socket Terminal Options



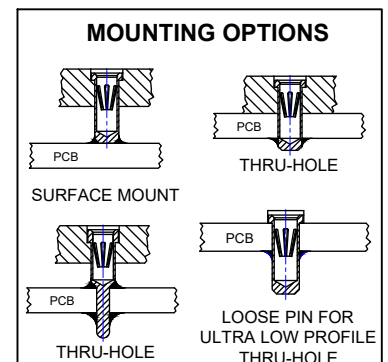
## Technical Information

### Material:

Insulator: Hi-Temp UL 94V-O  
 Terminal: Brass, per ASTM-B16  
 Contact: BeCu, Per ASTM-B194

**Plating: RoHS COMPLIANT**  
**R27 TERMINAL: GOLD / CONTACT: GOLD**  
**OTHER PLATINGS AVAILABLE**

Terminal Acceptance and Forces							
Thru Hole Socket Terminals				Surface Mount Socket Terminals			
Thru Hole Terminal	Accepts Pin Diameter	Insertion Force	Withdrawal Force	Surface Mount Terminal	Accepts Pin Diameter	Insertion Force	Withdrawal Force
<b>-01S</b>	Ø.018 [Ø0.46]	9.0 oz Avg.	2.0 oz Min	<b>-93S</b>	Ø.018 [Ø0.46]	9.0 oz Avg.	2.0 oz Min
<b>-295V</b>	Ø.030 [Ø0.76]	13.2 oz Max	3.5 oz Min	<b>-439V</b>	Ø.030 [Ø0.76]	13.2 oz Max	3.5 oz Min
<b>-433E</b>	Ø.040 [Ø1.02]	36.0 oz Max	3.9 oz Min	<b>-285E</b>	Ø.040 [Ø1.02]	36.0 oz Max	3.9 oz Min
<b>-436P55</b>	Ø.060 [Ø1.52]	15.5 oz Max	2.1 oz Min	<b>-440P55</b>	Ø.060 [Ø1.52]	15.5 oz Max	2.1 oz Min



©Copyright 2024 Andon Electronics Corporation. All Rights Reserved. This material is protected under US and other copyrights and may not be copied, sold, or redistributed in any form without written permission of Andon Electronics Corporation. Copyrights and trademarks are property of their respective companies. We reserve the right to change specifications without notice. Andon makes no warranty, expressed or implied, as to the suitability of the sockets for the intended purpose.

**"ANDON PROPRIETARY INFORMATION"**  
**RoHS Compliant**

\*Sockets are not drawn to scale Semea Tech Inc. 06/20/2024

**For fast, accurate placement of SIP sockets and ultra-low profile terminals**

**Phase 1:**  
Receive Carrier Assemblies designed to your pin layout.



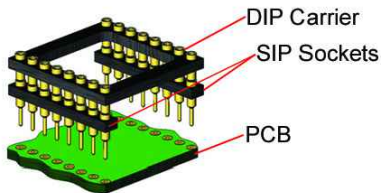
**Phase 2:**  
Place carrier assemblies onto PCB; run through your soldering process.



**Phase 3:**  
Remove carrier and plug in your device; discard carrier or send back to our factory for reloading.

## DIP

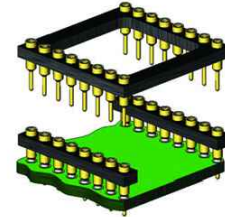
### Before Soldering



### During Soldering

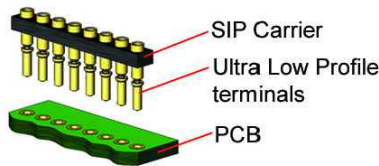


### After Soldering

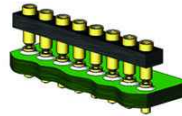


## ULTRA-LOW PROFILE SIP

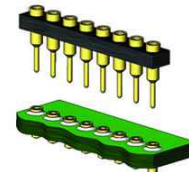
### Before Soldering



### During Soldering

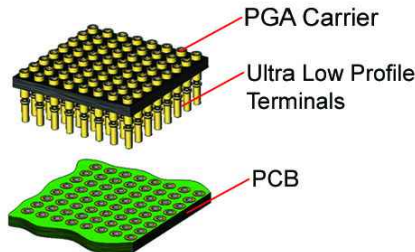


### After Soldering



## ULTRA-LOW PROFILE PGA

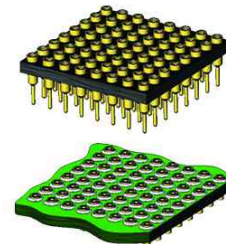
### Before Soldering



### During Soldering

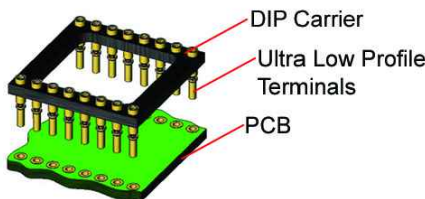


### After Soldering

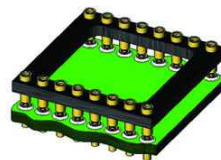


## ULTRA LOW PROFILE DIP

### Before Soldering



### During Soldering



### After Soldering

