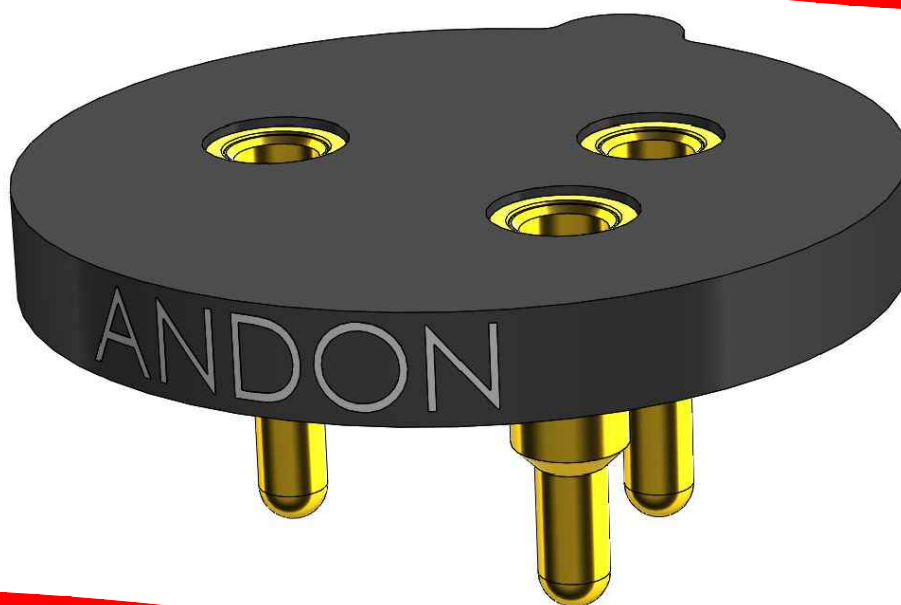




High-Reliability Gas Sensor Sockets for Ametek-Mocon



Featuring Andon's Unique SenstacTM Contact

AMETEK-MOCON, INC.					
AMETEK-MOCON, INC. Model Number	Andon Part Number Replace "XXX" with Terminal Type	Terminal Type		Pin Ø [in]	Figure Number
		Thru-Hole	Surface Mount		
045-010	R300-SP03-02T-XXX-R27-L14	436P55	440P55	.060	1
045-011	R300-SP03-02T-XXX-R27-L14	436P55	440P55	.060	1
045-012	R300-SP03-02T-XXX-R27-L14	436P55	440P55	.060	1
045-013	R300-SP03-02T-XXX-R27-L14	436P55	440P55	.060	1
045-014	R300-SP03-02T-XXX-R27-L14	436P55	440P55	.060	1
045-015	R300-SP03-02T-XXX-R27-L14	436P55	440P55	.060	1
045-017	R300-SP03-02T-XXX-R27-L14	436P55	440P55	.060	1
045-018	R300-SP03-02T-XXX-R27-L14	436P55	440P55	.060	1
043-262	R300-SP03-02T-XXX-R27-L14	436P55	440P55	.060	1
043-233	R300-SP03-02T-XXX-R27-L14	436P55	440P55	.060	1
043-234	R300-SP03-02T-XXX-R27-L14	436P55	440P55	.060	1
043-235	R300-SP03-02T-XXX-R27-L14	436P55	440P55	.060	1
043-399	R300-SP03-02T-XXX-R27-L14	436P55	440P55	.060	1
043-327	R300-SP03-02T-XXX-R27-L14	436P55	440P55	.060	1
043-328	R300-SP03-02T-XXX-R27-L14	436P55	440P55	.060	1
043-329	R300-SP03-02T-XXX-R27-L14	436P55	440P55	.060	1
043-240	R300-SP03-02T-XXX-R27-L14	436P55	440P55	.060	1
043-241	R300-SP03-02T-XXX-R27-L14	436P55	440P55	.060	1
042-208	R300-SP03-02T-XXX-R27-L14	436P55	440P55	.060	1
042-616	R300-SP03-02T-XXX-R27-L14	436P55	440P55	.060	1
042-209	R300-SP03-02T-XXX-R27-L14	436P55	440P55	.060	1
042-650	R300-SP03-02T-XXX-R27-L14	436P55	440P55	.060	1
042-651	R300-SP03-02T-XXX-R27-L14	436P55	440P55	.060	1
042-652	R300-SP03-02T-XXX-R27-L14	436P55	440P55	.060	1
042-655	R300-SP03-02T-XXX-R27-L14	436P55	440P55	.060	1
042-699	R300-SP03-02T-XXX-R27-L14	436P55	440P55	.060	1
042-700	R300-SP03-02T-XXX-R27-L14	436P55	440P55	.060	1
043-239	R300-SP03-02T-XXX-R27-L14	436P55	440P55	.060	1

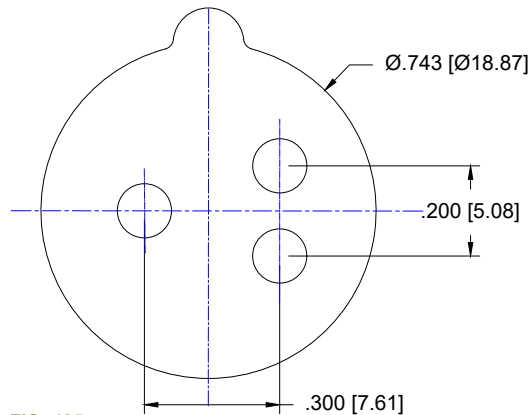
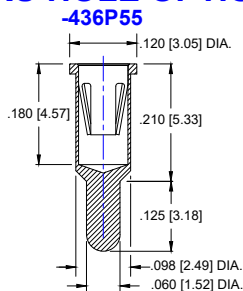
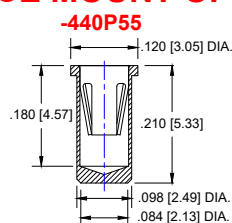


FIG: 125
Thru-Hole: R300-SP03-02T-436P55-R27-L14
Surface Mount: R300-SP03-02T-440P55-R27-L14

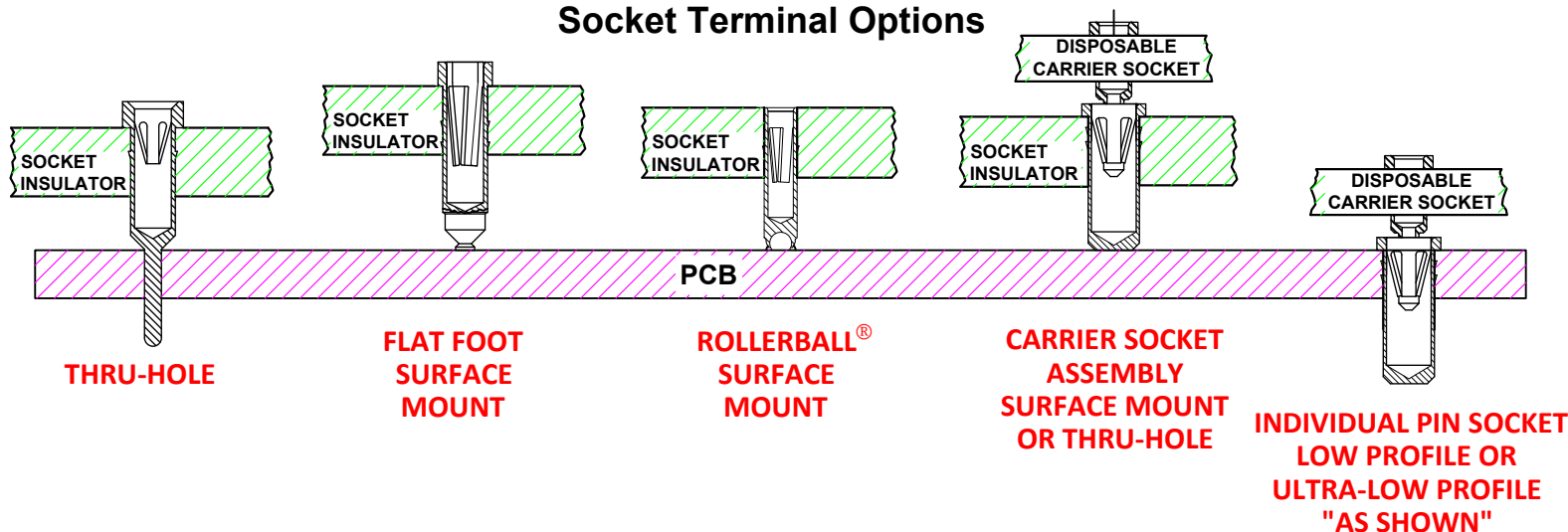
THRU HOLE OPTION



SURFACE MOUNT OPTION



Socket Terminal Options



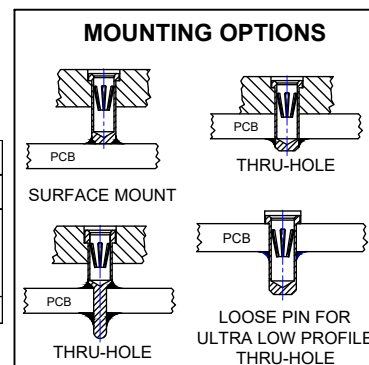
Technical Information

Material:

Insulator: Hi-Temp UL 94V-O
Terminal: Brass, per ASTM-B16
Contact: BeCu, Per ASTM-B194

Plating: RoHS COMPLIANT
R27 TERMINAL: GOLD / CONTACT: GOLD
OTHER PLATINGS AVAILABLE

Terminal Acceptance and Forces							
Thru Hole Socket Terminals				Surface Mount Socket Terminals			
Thru Hole Terminal	Accepts Pin Diameter	Insertion Force	Withdrawal Force	Surface Mount Terminal	Accepts Pin Diameter	Insertion Force	Withdrawal Force
-436P55	Ø.060 [Ø1.52]	15.5 oz Max	2.1 oz Min	-440P55	Ø.060 [Ø1.52]	15.5 oz Max	2.1 oz Min



For fast, accurate placement of SIP sockets and ultra-low profile terminals

Phase 1:
Receive Carrier Assemblies designed to your pin layout.



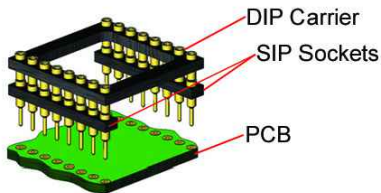
Phase 2:
Place carrier assemblies onto PCB; run through your soldering process.



Phase 3:
Remove carrier and plug in your device; discard carrier or send back to our factory for reloading.

DIP

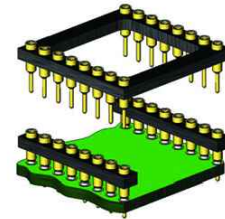
Before Soldering



During Soldering

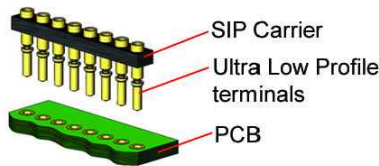


After Soldering

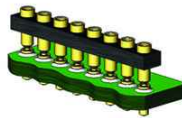


ULTRA-LOW PROFILE SIP

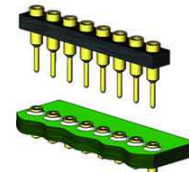
Before Soldering



During Soldering

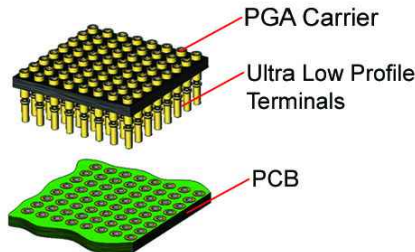


After Soldering



ULTRA-LOW PROFILE PGA

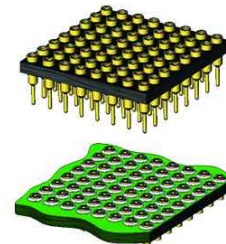
Before Soldering



During Soldering

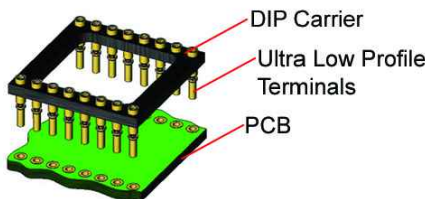


After Soldering

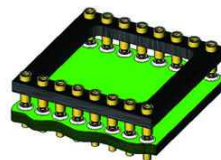


ULTRA LOW PROFILE DIP

Before Soldering



During Soldering



After Soldering

