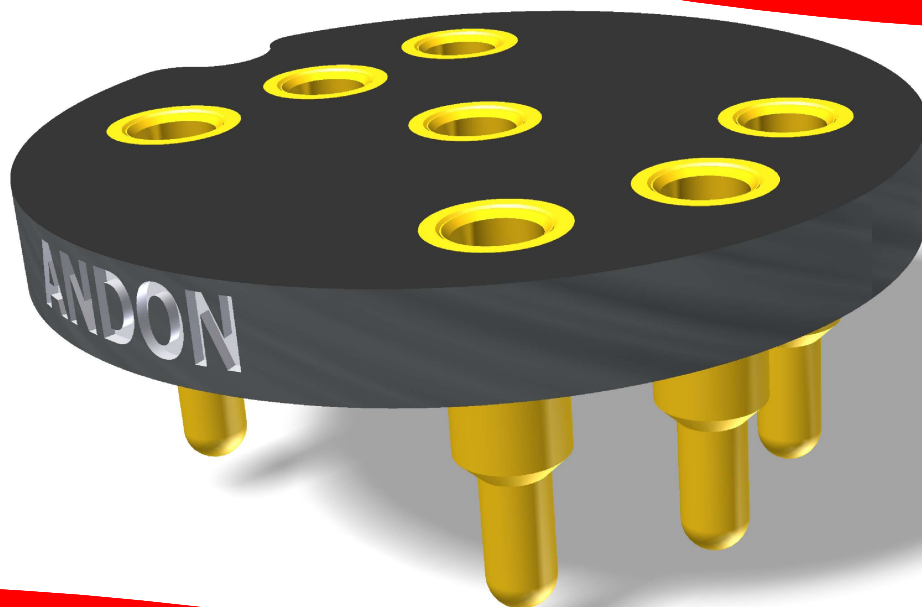


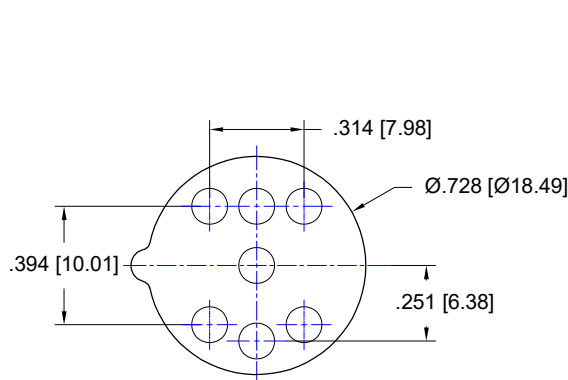
**HIGH RELIABILITY  
OPTO-GAS SENSOR SOCKETS FOR  
DYNAMENT LTD.**



**Featuring Andon's Unique Senstac<sup>TM</sup> Contact**

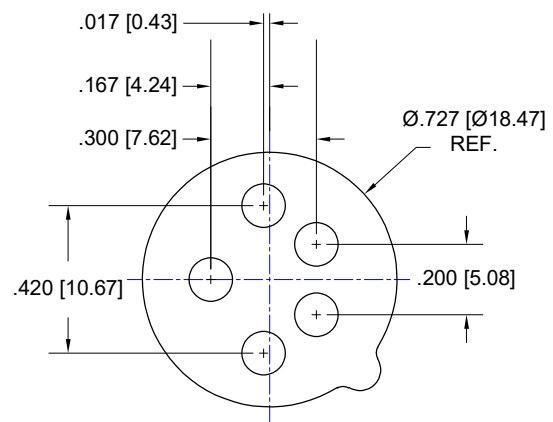
DYNAMENT LIMITED						
Dynament Limited Model Number	Andon Part Number Replace "XXX" with Terminal Type	Terminal Type		Pin Ø [in]	Figure Number	Page Number
		Thru-Hole	Surface Mount			
TDS0001	R505-SP07-01T-XXX-R27-L14	436P55	440P55	.060	1	1
TDS0002	R505-SP07-01T-XXX-R27-L14	436P55	440P55	.060	1	1
TDS0003	R505-SP07-01T-XXX-R27-L14	436P55	440P55	.060	1	1
TDS0004	R505-SP07-01T-XXX-R27-L14	436P55	440P55	.060	1	1
TDS0018	R505-SP07-01T-XXX-R27-L14	436P55	440P55	.060	1	1
TDS0019	R505-SP07-01T-XXX-R27-L14	436P55	440P55	.060	1	1
TDS0020	R505-SP07-01T-XXX-R27-L14	436P55	440P55	.060	1	1
TDS0021	R505-SP07-01T-XXX-R27-L14	436P55	440P55	.060	1	1
TDS0024	R505-SP07-01T-XXX-R27-L14	436P55	440P55	.060	1	1
TDS0031	R505-SP07-01T-XXX-R27-L14	436P55	440P55	.060	1	1
TDS0036	R420-SP05-04T-XXX-R27-L14	436P55	440P55	.060	2	1
TDS0074	R505-SP07-01T-XXX-R27-L14	436P55	440P55	.060	1	1
TDS0089	R505-SP07-01T-XXX-R27-L14	436P55	440P55	.060	1	1
TDS0100	R505-SP07-01T-XXX-R27-L14	436P55	440P55	.060	1	1
DS0001	R420-SP05-04T-XXX-R27-L14	436P55	440P55	.060	2	1
DS0002	R420-SP05-04T-XXX-R27-L14	436P55	440P55	.060	2	1
DS0003	R420-SP05-04T-XXX-R27-L14	436P55	440P55	.060	2	1
DS0004	R420-SP05-04T-XXX-R27-L14	436P55	440P55	.060	2	1
DS0005	R420-SP05-04T-XXX-R27-L14	436P55	440P55	.060	2	1

See last page for other mounting types including low profile options.  
Heat sink socket available to reduce heat and noise. Contact Andon for details.



**FIG: 1**

Thru-Hole: R505-SP07-01T-436P55-R27-L14  
Surface Mount: R505-SP07-01T-440P55-R27-L14



**FIG:2**

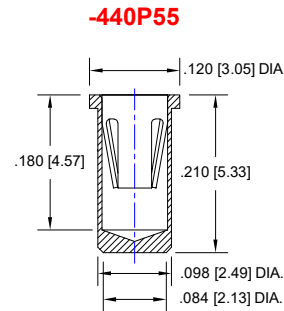
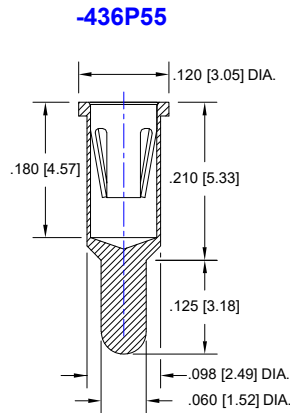
Thru-Hole: R420-SP05-04T-436P55-R27-L14  
Surface Mount: R420-SP05-04T-440P55-R27-L14

## DYNAMENT LIMITED Continued

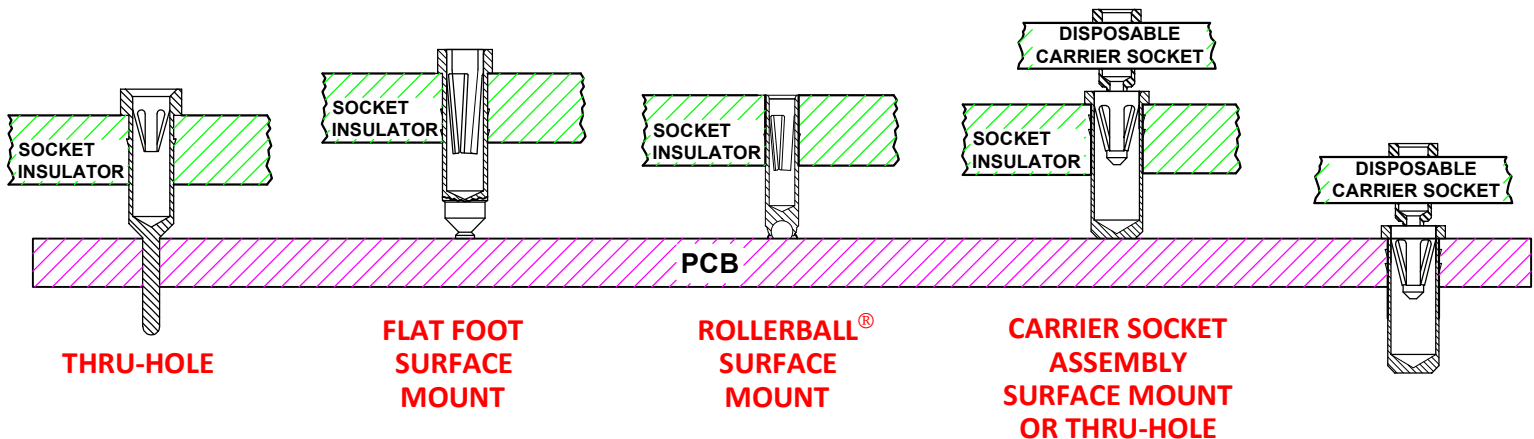
### Socket Terminal Details Cross Section View Shown Units: in [mm]

#### THRU HOLE OPTION

#### SURFACE MOUNT OPTION



### Socket Terminal Options



### Technical Information

#### Material:

Insulator: Hi-Temp UL 94V-O  
Terminal: Brass, per ASTM-B16  
Contact: BeCu, Per ASTM-B194

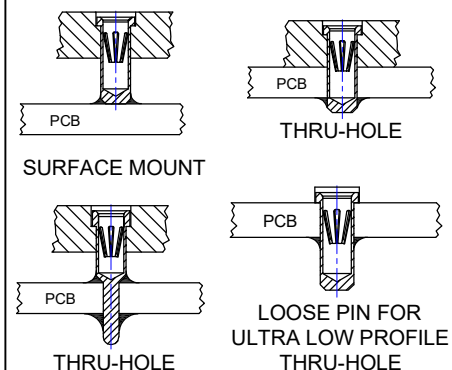
#### Plating: RoHS COMPLIANT

**R27 TERMINAL: GOLD / CONTACT: GOLD**  
**R29 TERMINAL: MATTE TIN / CONTACT: GOLD**  
**R32 TERMINAL: MATTE TIN / CONTACT: TIN**

#### OTHER PLATINGS AVAILABLE

Terminal Acceptance and Forces							
Thru Hole Terminals				Surface Mount Terminals			
Thru Hole Terminal	Accepts Pin Diameter	Insertion Force	Withdrawal Force	Surface Mount Terminal	Accepts Pin Diameter	Insertion Force	Withdrawal Force
<b>-436P55</b>	Ø.060 [Ø1.52]	15.5 oz Avg.	2.1 oz Min	<b>-440P55</b>	Ø.060 [Ø1.52]	15.5 oz Avg.	2.1 oz Min

### MOUNTING OPTIONS



©Copyright 2025 Andon Electronics Corporation. All Rights Reserved. This material is protected under US and other copyrights and may not be copied, sold, or redistributed in any form without written permission of Andon Electronics Corporation. Copyrights and trademarks are property of their respective companies. We reserve the right to change specifications without notice. Andon makes no warranty, expressed or implied, as to the suitability of the sockets for the intended purpose.

"ANDON PROPRIETARY INFORMATION"

**RoHS Compliant**

\*Sockets are not drawn to scale DYNAMENT LIMITED 03/03/2025

**ANDON ELECTRONICS CORPORATION**  
4 Court Drive, Lincoln RI 02865, United States of America

[www.andonelectronics.com](http://www.andonelectronics.com) or [www.andonelect.com](http://www.andonelect.com)  
Phone 401-333-0388 Fax 401-333-0287  
Email [Info@andonelect.com](mailto:Info@andonelect.com)

**Phase 1:**  
Receive Carrier Assemblies  
designed to your pin layout.



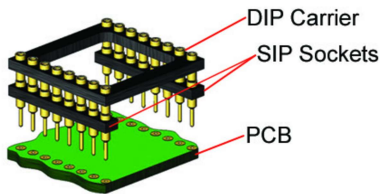
**Phase 2:**  
Place carrier assemblies onto PCB;  
run through your soldering process.



**Phase 3:**  
Remove carrier and plug in your device; discard  
carrier or send back to our factory for reloading.

## DIP

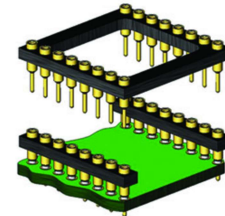
### Before Soldering



### During Soldering

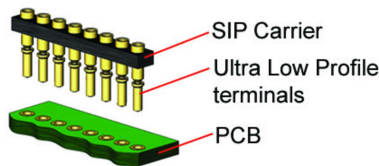


### After Soldering

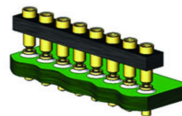


## ULTRA-LOW PROFILE SIP

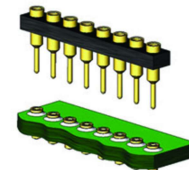
### Before Soldering



### During Soldering

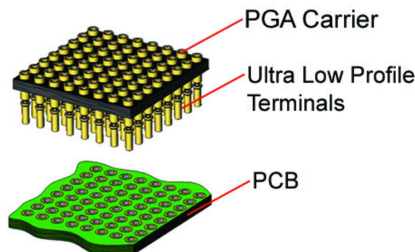


### After Soldering

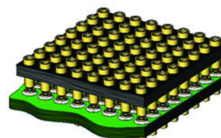


## ULTRA-LOW PROFILE PGA

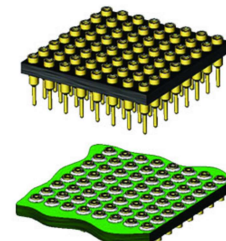
### Before Soldering



### During Soldering

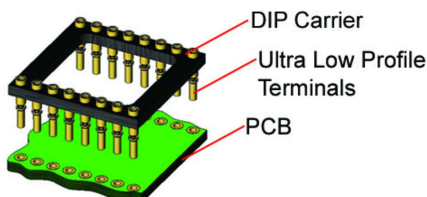


### After Soldering

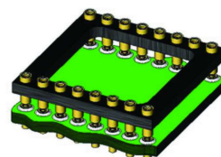


## ULTRA LOW PROFILE DIP

### Before Soldering



### During Soldering



### After Soldering

