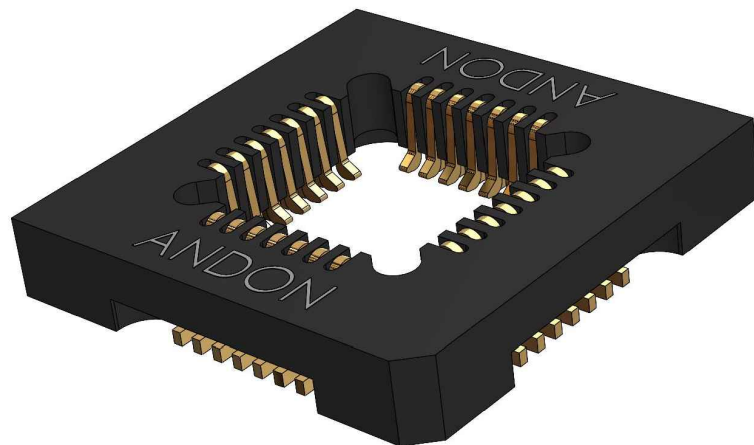




High-Reliability Gas Sensor Sockets for Micro-Hybrid Electronics Inc.



Featuring Andon's Unique SenstacTM Contact

MICRO-HYBRID ELECTRONIC GmbH						
MICRO-HYBRID ELECTRONIC GmbH Model Number	Andon Part Number Replace "XXX" with Terminal Type	Terminal Type		Pin Ø [in]	Figure Number	Page Number
		Thru-Hole	Surface Mount			
MTS4SENS	R230-0806-03T-211S-R27-L14	211S	384S	.018	1	1
MTS2SENS	R200-0404-01T-01S-R27-L14	01S	93S	.018	2	1
MPS4SENS	R200-0808-01T-75S-R27-L14	75S	265S	.018	3	1
MPS2SENS	R200-0805-01T-75S-R27-L14	75S	265S	.018	4	1
MTS1HIGHTEMP80	R200-0404-01T-01S-R27-L14	01S	93S	.018	2	1
MTS1TEMP80/44	R200-0404-01T-01S-R27-L14	01S	93S	.018	2	1
JSIR 340-4-LCC	687-28-SM-G10-L14-X	N/A	N/A	N/A	6	2
JSIR 340-4-T039	R200-0403-01T-01S-R27-L14	01S	93S	.018	5	2
JSIR 350-4	R200-0403-01T-01S-R27-L14	01S	93S	.018	5	2
JSIR 350-5	R200-0403-01T-01S-R27-L14	01S	93S	.018	5	2

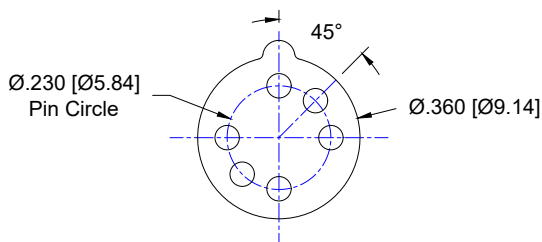


FIG: 1
Thru-Hole: R230-0806-03T-**211S**-R27-L14
Surface Mount: R230-0806-03T-**384S**-R27-L14

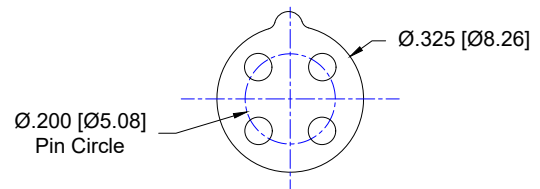


FIG: 2
Thru-Hole: R200-0404-01T-**01S**-R27-L14
Surface Mount: R200-0404-01T-**93S**-R27-L14

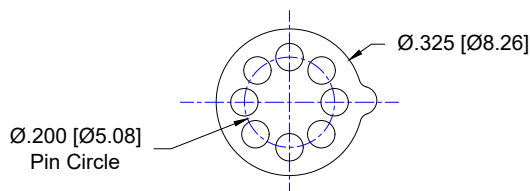


FIG: 3
Thru-Hole: R200-0808-01T-**75S**-R27-L14
Surface Mount: R200-0808-01T-**265S**-R27-L14

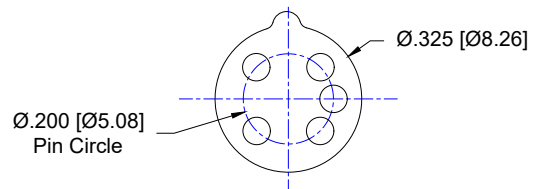


FIG: 4
Thru-Hole: R200-0805-02T-**75S**-R27-L14
Surface Mount: R200-0805-02T-**265S**-R27-L14

Heat sink socket available to reduce heat and noise. Contact Andon for details.

Top View Shown Units: in [mm]

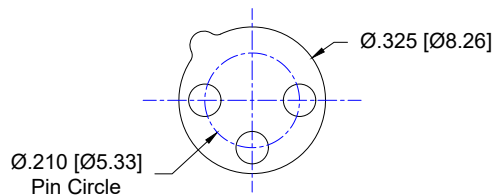
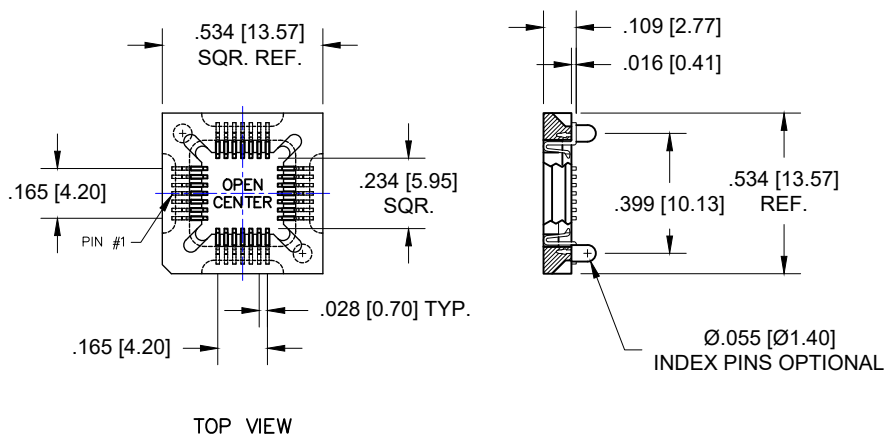


FIG: 5

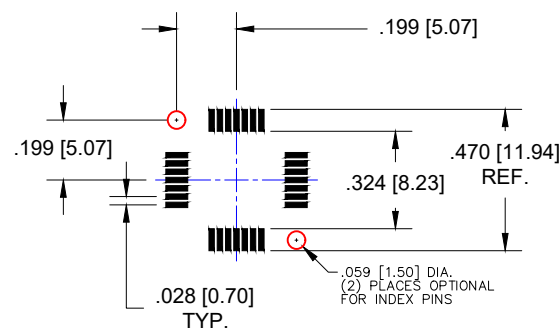
Thru-Hole: R210-0403-01T-01S-R27-L14
Surface Mount: R210-0403-01T-93S-R27-L14



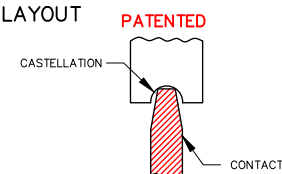
TOP VIEW

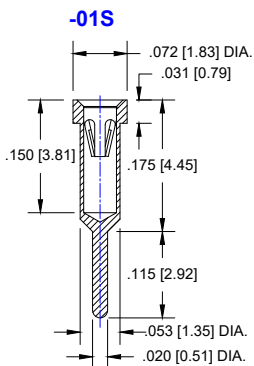
FIG: 6

Surface Mount: 687-28-SM-G10-L14-X

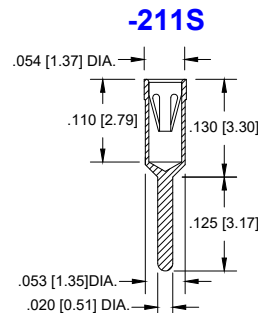
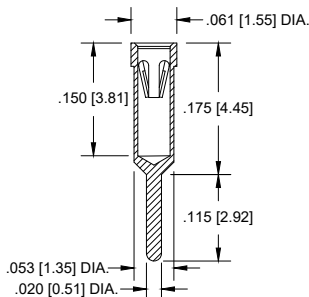


RECOMMENDED PCB LAYOUT



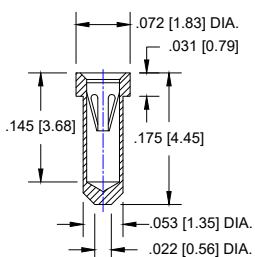


THRU HOLE OPTION -75S

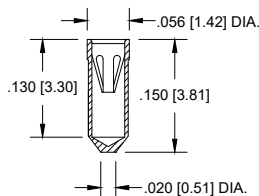


SURFACE MOUNT OPTION

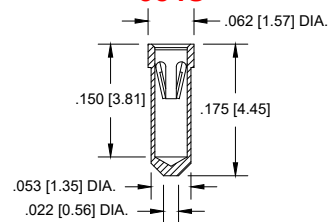
-93S



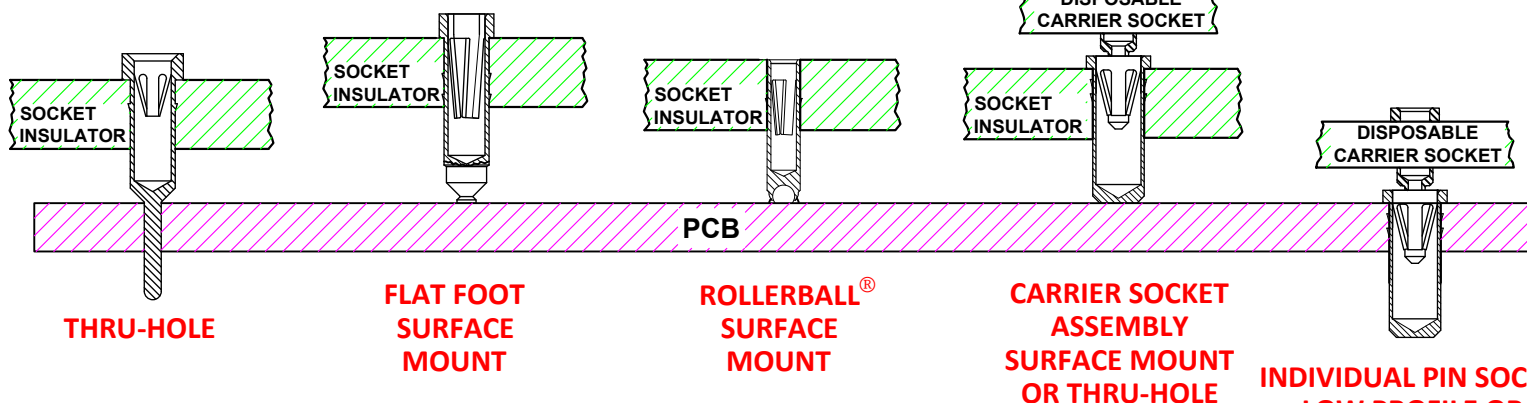
-265S



-384S



Socket Terminal Options



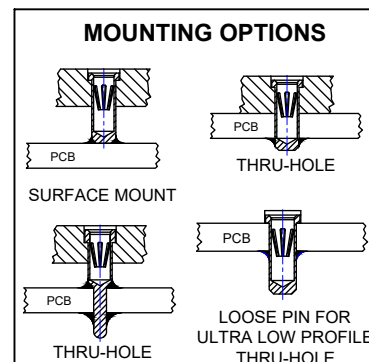
Technical Information

Material:

Insulator: Hi-Temp UL 94V-O
Terminal: Brass, per ASTM-B16
Contact: BeCu, Per ASTM-B194

Plating: RoHS COMPLIANT
R27 TERMINAL: GOLD / CONTACT: GOLD
OTHER PLATINGS AVAILABLE

Terminal Acceptance and Forces							
Thru Hole Socket Terminals				Surface Mount Socket Terminals			
Thru Hole Terminal	Accepts Pin Diameter	Insertion Force	Withdrawal Force	Surface Mount Terminal	Accepts Pin Diameter	Insertion Force	Withdrawal Force
-01S	Ø.018 [Ø0.46]	9.0 oz Avg.	2.0 oz Min	-93S	Ø.018 [Ø0.46]	9.0 oz Avg.	2.0 oz Min
-75S	Ø.018 [Ø0.46]	9.0 oz Avg.	2.0 oz Min	-265S	Ø.018 [Ø0.46]	9.0 oz Avg.	2.0 oz Min
-211S	Ø.018 [Ø0.46]	9.0 oz Avg.	2.0 oz Min	-384S	Ø.018 [Ø0.46]	9.0 oz Avg.	2.0 oz Min



©Copyright 2024 Andon Electronics Corporation. All Rights Reserved. This material is protected under US and other copyrights and may not be copied, sold, or redistributed in any form without written permission of Andon Electronics Corporation. Copyrights and trademarks are property of their respective companies. We reserve the right to change specifications without notice. Andon makes no warranty, expressed or implied, as to the suitability of the sockets for the intended purpose.

*Sockets are not drawn to scale Micro-Hybrid Electronics GmbH. 04/12/2024

For fast, accurate placement of SIP sockets and ultra-low profile terminals

Phase 1:
Receive Carrier Assemblies designed to your pin layout.



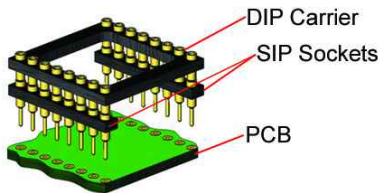
Phase 2:
Place carrier assemblies onto PCB; run through your soldering process.



Phase 3:
Remove carrier and plug in your device; discard carrier or send back to our factory for reloading.

DIP

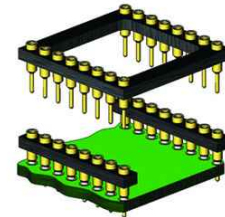
Before Soldering



During Soldering

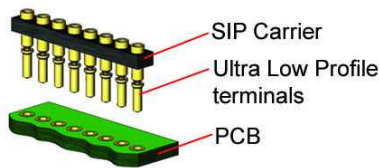


After Soldering

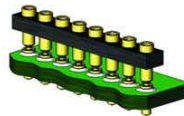


ULTRA-LOW PROFILE SIP

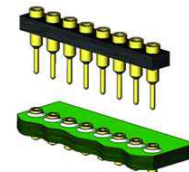
Before Soldering



During Soldering

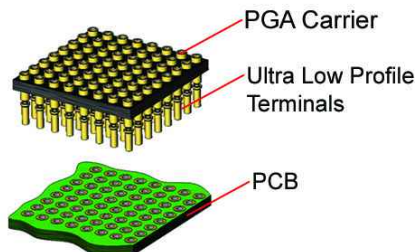


After Soldering



ULTRA-LOW PROFILE PGA

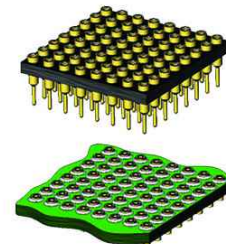
Before Soldering



During Soldering

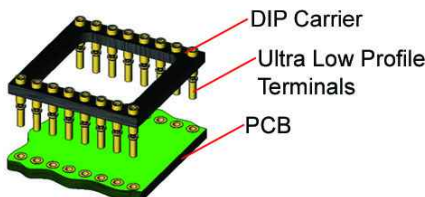


After Soldering

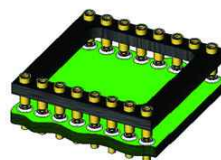


ULTRA LOW PROFILE DIP

Before Soldering



During Soldering



After Soldering

