

High-Reliability Gas Sensor Sockets for N.E.T. S.r.l.



Featuring Andon's Unique SenstacTM Contact

N.E.T.						
N.E.T. Part Number	Andon Part Number Replace "XXX" With terminal Type	Terminal Type		Pin Ø [in]	Figure Number	Page Number
		Thru-Hole	Surface Mount			
CYBER TTL	421-207-XXX-R27-L14	75P28	384P28	0.021	7	3
IREF LITE - A2L	R420-SP05-04T-XXX-R27-L14	436P55	440P55	0.062	1	2
IREF LITE-ppm	R420-SP05-04T-XXX-R27-L14	436P55	440P55	0.062	1	2
IREF-L LFL	R420-SP05-04T-XXX-R27-L14	436P55	440P55	0.062	1	2
IREF-L ppm	R420-SP05-04T-XXX-R27-L14	436P55	440P55	0.062	1	2
IREF-P 32mm	R420-SP05-04T-XXX-R27-L14	436P55	440P55	0.062	1	2
IREF-P Ethylene	R420-SP05-04T-XXX-R27-L14	436P55	440P55	0.062	1	2
IREF-P R-1233zd ppm	R420-SP05-04T-XXX-R27-L14	436P55	440P55	0.062	1	2
IREF-P R-1234yf LEL & ppm	R420-SP05-04T-XXX-R27-L14	436P55	440P55	0.062	1	2
IREF-P R-1234ze LEL & ppm	R420-SP05-04T-XXX-R27-L14	436P55	440P55	0.062	1	2
IREF-P R-125ppm	R420-SP05-04T-XXX-R27-L14	436P55	440P55	0.062	1	2
IREF-P R-134a ppm	R420-SP05-04T-XXX-R27-L14	436P55	440P55	0.062	1	2
IREF-P R-143a ppm	R420-SP05-04T-XXX-R27-L14	436P55	440P55	0.062	1	2
IREF-P R-22 ppm	R420-SP05-04T-XXX-R27-L14	436P55	440P55	0.062	1	2
IREF-P R-227ea ppm	R420-SP05-04T-XXX-R27-L14	436P55	440P55	0.062	1	2
IREF-P R-32 LEL & ppm	R420-SP05-04T-XXX-R27-L14	436P55	440P55	0.062	1	2
IREF-P R-404a ppm	R420-SP05-04T-XXX-R27-L14	436P55	440P55	0.062	1	2
IREF-P R-407a ppm	R420-SP05-04T-XXX-R27-L14	436P55	440P55	0.062	1	2
IREF-P R-407f ppm	R420-SP05-04T-XXX-R27-L14	436P55	440P55	0.062	1	2
IREF-P R-410a ppm	R420-SP05-04T-XXX-R27-L14	436P55	440P55	0.062	1	2
IREF-P R-417a ppm	R420-SP05-04T-XXX-R27-L14	436P55	440P55	0.062	1	2
IREF-P R-422d ppm	R420-SP05-04T-XXX-R27-L14	436P55	440P55	0.062	1	2
IREF-P R-448a ppm	R420-SP05-04T-XXX-R27-L14	436P55	440P55	0.062	1	2
IREF-P R-449a ppm	R420-SP05-04T-XXX-R27-L14	436P55	440P55	0.062	1	2
IREF-P R-450a ppm	R420-SP05-04T-XXX-R27-L14	436P55	440P55	0.062	1	2
IREF-P R-452a ppm	R420-SP05-04T-XXX-R27-L14	436P55	440P55	0.062	1	2
IREF-P R-452b LEL & ppm	R420-SP05-04T-XXX-R27-L14	436P55	440P55	0.062	1	2
IREF-P R-454a ppm	R420-SP05-04T-XXX-R27-L14	436P55	440P55	0.062	1	2
IREF-P R-454b LEL & ppm	R420-SP05-04T-XXX-R27-L14	436P55	440P55	0.062	1	2
IREF-P R-454c LEL	R420-SP05-04T-XXX-R27-L14	436P55	440P55	0.062	1	2
IREF-P R-455a LEL	R420-SP05-04T-XXX-R27-L14	436P55	440P55	0.062	1	2
IREF-P R-507 ppm	R420-SP05-04T-XXX-R27-L14	436P55	440P55	0.062	1	2
IREF-P R-513a ppm	R420-SP05-04T-XXX-R27-L14	436P55	440P55	0.062	1	2
IREF-P SF6	R420-SP05-04T-XXX-R27-L14	436P55	440P55	0.062	1	2
IREF-PRO - EXTENDED	R420-SP05-04T-XXX-R27-L14	436P55	440P55	0.062	1	2
IRNET-P 20mm DUAL RANGE	R420-SP05-04T-XXX-R27-L14	436P55	440P55	0.062	1	2
IRNET-P-20 CH4 - HIGH RANGE	R420-SP05-04T-XXX-R27-L14	436P55	440P55	0.062	1	2
IRNET-P-20 CH4 - LOW RANGE	R420-SP05-04T-XXX-R27-L14	436P55	440P55	0.062	1	2
IRNET-P-20 CO2 - 0-100%	R420-SP05-04T-XXX-R27-L14	436P55	440P55	0.062	1	2
IRNET-P-20 CO2 - 0-20%	R420-SP05-04T-XXX-R27-L14	436P55	440P55	0.062	1	2
IRNET-P-20 CO2 -HIGH RANGE	R420-SP05-04T-XXX-R27-L14	436P55	440P55	0.062	1	2
IRNET-P-20 CO2 LOW RANGE	R420-SP05-04T-XXX-R27-L14	436P55	440P55	0.062	1	2
IRNET-P-20 PROPANE	R420-SP05-04T-XXX-R27-L14	436P55	440P55	0.062	1	2
IRNET-P-32 CH4 LOW RANGE	R420-SP05-04T-XXX-R27-L14	436P55	440P55	0.062	1	2
IRNET-P-32 CO2 LOW RANGE	R420-SP05-04T-XXX-R27-L14	436P55	440P55	0.062	1	2
IRNET-P-32 PROPANE	R420-SP05-04T-XXX-R27-L14	436P55	440P55	0.062	1	2
IRNET-P-32 REFRIGERANTS	R420-SP05-04T-XXX-R27-L14	436P55	440P55	0.062	1	2

Heat sink socket available to reduce heat and noise. Contact Andon for details.

N.E.T.						
N.E.T. Part Number	Andon Part Number Replace "XXX" With terminal Type	Terminal Type		Pin Ø [in]	Figure Number	Page Number
		Thru-Hole	Surface Mount			
NP-17SHM	R275-SP04-01T-XXX-R27-L14	295V	442V	0.018	5	3
NP-17SHP	R275-SP04-01T-XXX-R27-L15	295V	442V	0.018	5	3
NP-18SHM	R275-SP04-01T-XXX-R27-L16	295V	442V	0.018	5	3
NP-18SHP	R275-SP04-01T-XXX-R27-L17	295V	442V	0.018	5	3
NP-30SHM	R275-SP04-01T-XXX-R27-L18	295V	442V	0.018	5	3
NP-30SHP	R275-SP04-01T-XXX-R27-L19	295V	442V	0.018	5	3
NT-C2H4-PL100	R530-0403-01T-XXX-R27-L14	436P55	440P55	0.062	6	3
NT-CL2-PL10	R530-0403-01T-XXX-R27-L14	436P55	440P55	0.062	6	3
NT-CL2-PL5	R530-0403-01T-XXX-R27-L14	436P55	440P55	0.062	6	3
NT-CO-PL1000	R530-0403-01T-XXX-R27-L14	436P55	440P55	0.062	6	3
NT-CO-PL2000-HT	R530-0403-01T-XXX-R27-L14	436P55	440P55	0.062	6	3
NT-CO-SLI1000	R530-0403-01T-XXX-R27-L14	436P55	440P55	0.062	6	3
NT-H2O2-PL300	R530-0403-01T-XXX-R27-L14	436P55	440P55	0.062	6	3
NT-H2S-PL100	R530-0403-01T-XXX-R27-L14	436P55	440P55	0.062	6	3
NT-H2S-PL100-HT	R530-0403-01T-XXX-R27-L14	436P55	440P55	0.062	6	3
NT-H2S-PL20-HT	R530-0403-01T-XXX-R27-L14	436P55	440P55	0.062	6	3
NT-NH3-PL100	R530-0403-01T-XXX-R27-L14	436P55	440P55	0.062	6	3
NT-NH3-PL1000	R530-0403-01T-XXX-R27-L14	436P55	440P55	0.062	6	3
NT-NH3-PL300	R530-0403-01T-XXX-R27-L14	436P55	440P55	0.062	6	3
NT-NH3-PL5000	R530-0403-01T-XXX-R27-L14	436P55	440P55	0.062	6	3
NT-NO2-PL10	R530-0403-01T-XXX-R27-L14	436P55	440P55	0.062	6	3
NT-NO2-PL30	R530-0403-01T-XXX-R27-L14	436P55	440P55	0.062	6	3
NT-NO2-SLI30	R530-0403-01T-XXX-R27-L14	436P55	440P55	0.062	6	3
NT-NO-PL300	R530-0403-01T-XXX-R27-L14	436P55	440P55	0.062	6	3
NT-O2-A2	R530-SP02-01T-XXX-R27-L14	436P55	440P55	0.062	3	3
NT-O2-A3	R530-SP02-01T-XXX-R27-L14	436P55	440P55	0.062	3	3
NT-O2-SL13	R530-SP03-03N-XXX-R27-L14	436P55	440P55	0.062	4	3
NT-O2-SLF	R530-SP03-02T-XXX-R27-L14	436P55	440P55	0.062	2	2
NT-O3-PL10	R530-0403-01T-XXX-R27-L14	436P55	440P55	0.062	6	3
NT-SO2-PL100	R530-0403-01T-XXX-R27-L14	436P55	440P55	0.062	6	3
NT-SO2-PL20	R530-0403-01T-XXX-R27-L14	436P55	440P55	0.062	6	3

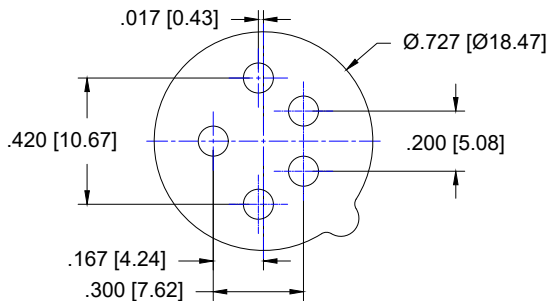


FIG: 1

Thru-Hole: R420-SP05-04T-436P55-R27-L14

Surface Mount: R420-SP05-04T-440P55-R27-L14

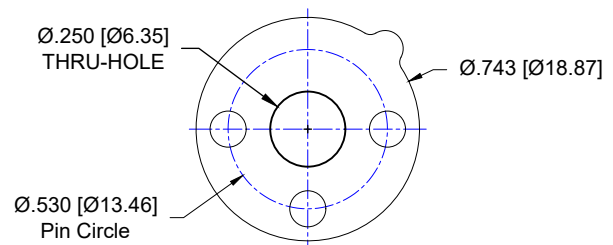


FIG: 2

Thru-Hole: R530-SP03-02T-436P55-R27-L14

Surface Mount: R530-SP03-02T-440P55-R27-L14

UNITS: IN [mm]

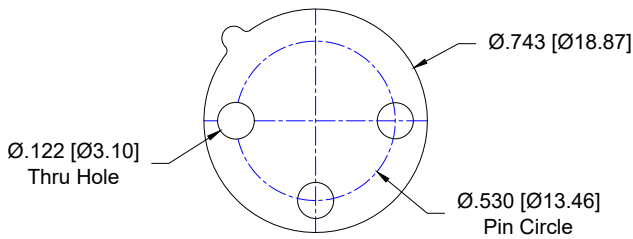


FIG: 3

Thru-Hole: R530-SP02-01T-436P55-R27-L14
Surface Mount: R530-SP02-01T-440P55-R27-L14

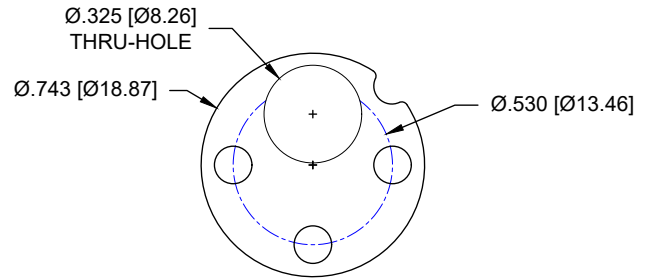


FIG: 4

Thru-Hole: R530-SP03-03N-436P55-R27-L14
Surface Mount: R530-SP03-03N-440P55-R27-L14

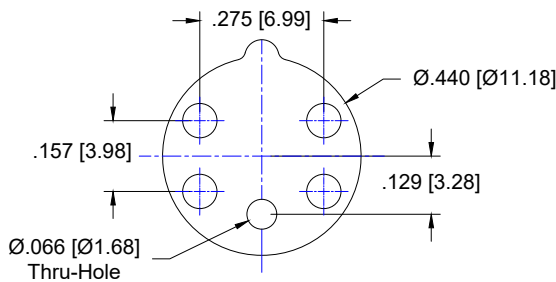


FIG: 5

Thru-Hole: R275-SP04-01T-295V-R27-L14
Surface Mount: R275-SP04-01T-439V-R27-L14

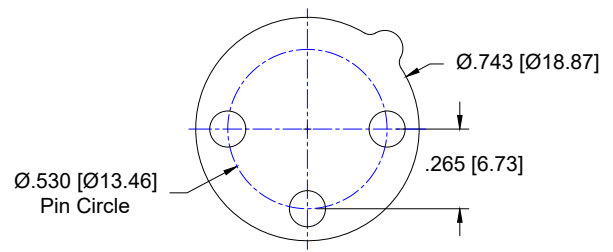


FIG: 6

Thru-Hole: R530-0403-01T-436P55-R27-L14
Surface Mount: R530-0403-01T-440P55-R27-L14

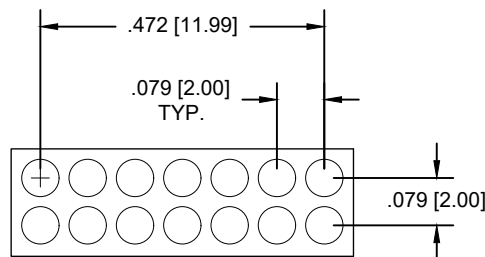
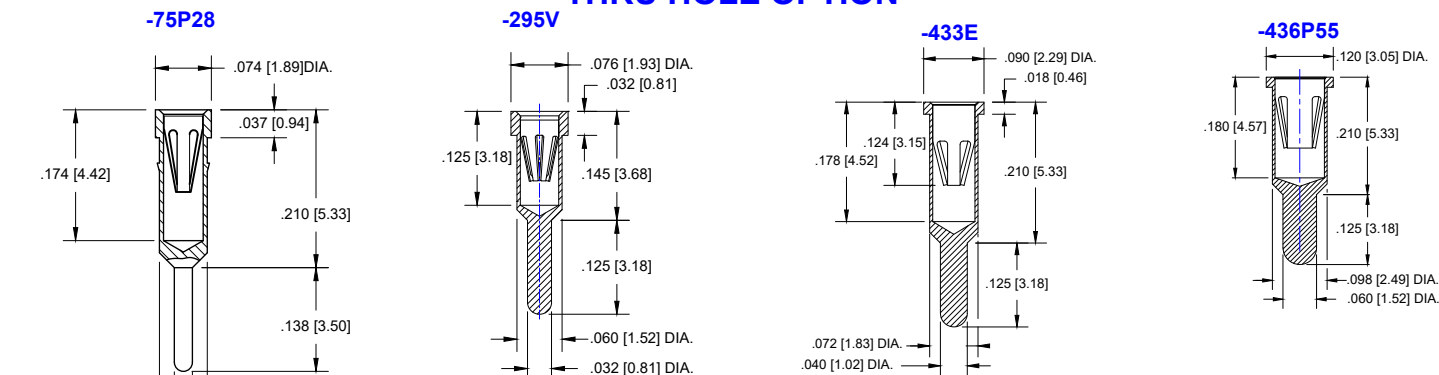


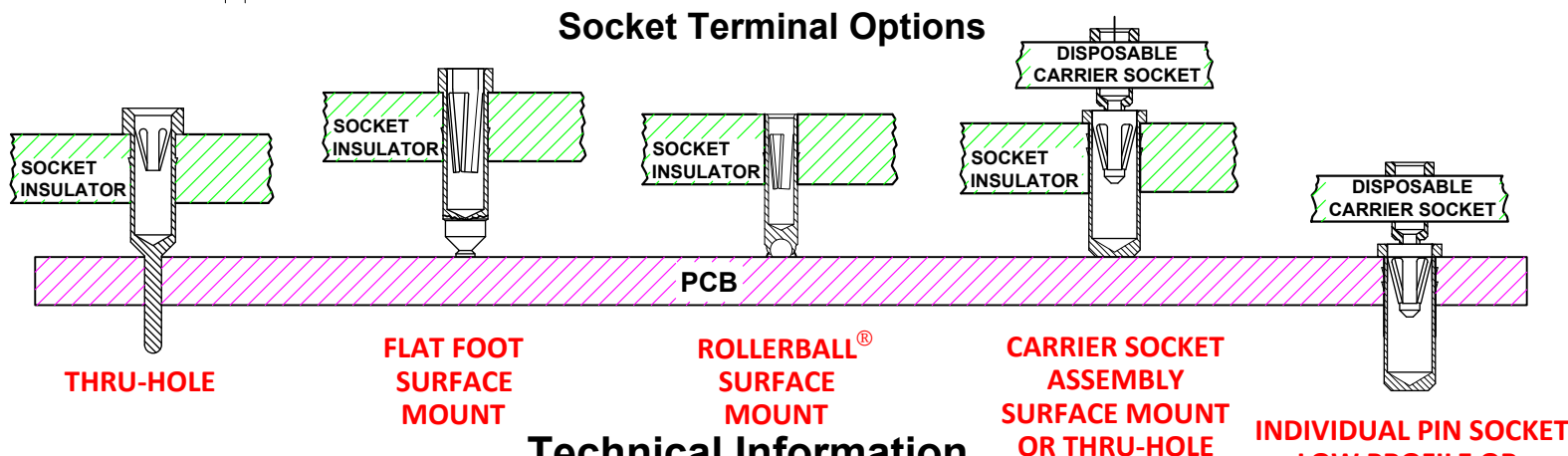
FIG: 7

Thru-Hole: 421-207-75P28-R27-L14
Surface Mount: 421-207-384P28-R27-L14

THRU HOLE OPTION



SURFACE MOUNT OPTION



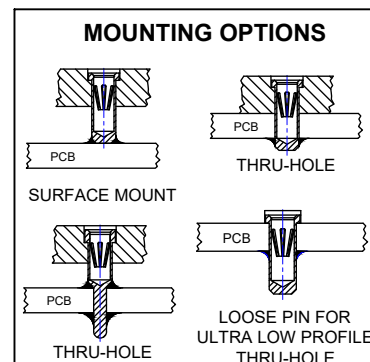
Technical Information

Material:

Insulator: Hi-Temp UL 94V-O
 Terminal: Brass, per ASTM-B16
 Contact: BeCu, Per ASTM-B194

Plating: RoHS COMPLIANT
R27 TERMINAL: GOLD / CONTACT: GOLD
OTHER PLATINGS AVAILABLE

Terminal Acceptance and Forces							
Thru Hole Socket Terminals				Surface Mount Socket Terminals			
Thru Hole Terminal	Accepts Pin Diameter	Insertion Force	Withdrawal Force	Surface Mount Terminal	Accepts Pin Diameter	Insertion Force	Withdrawal Force
-75P28	Ø.021 [Ø0.53]	13.5 oz Max	3.6 oz Min	-384P28	Ø.021 [Ø0.53]	13.5 oz Max	3.6 oz Min
-295V	Ø.030 [Ø0.76]	13.2 oz Max	3.5 oz Min	-439V	Ø.030 [Ø0.76]	13.2 oz Max	3.5 oz Min
-433E	Ø.040 [Ø1.02]	36.0 oz Max	3.9 oz Min	-285E	Ø.040 [Ø1.02]	36.0 oz Max	3.9 oz Min
-436P55	Ø.060 [Ø1.52]	15.5 oz Max	2.1 oz Min	-440P55	Ø.060 [Ø1.52]	15.5 oz Max	2.1 oz Min



©Copyright 2024 Andon Electronics Corporation. All Rights Reserved. This material is protected under US and other copyrights and may not be copied, sold, or redistributed in any form without written permission of Andon Electronics Corporation. Copyrights and trademarks are property of their respective companies. We reserve the right to change specifications without notice. Andon makes no warranty, expressed or implied, as to the suitability of the sockets for the intended purpose.

"ANDON PROPRIETARY INFORMATION"
RoHS Compliant

*Sockets are not drawn to scale **N.E.T. S.r.l.** 05/02/2024

For fast, accurate placement of SIP sockets and ultra-low profile terminals

Phase 1:
Receive Carrier Assemblies designed to your pin layout.



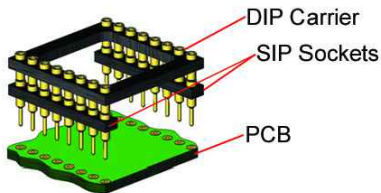
Phase 2:
Place carrier assemblies onto PCB; run through your soldering process.



Phase 3:
Remove carrier and plug in your device; discard carrier or send back to our factory for reloading.

DIP

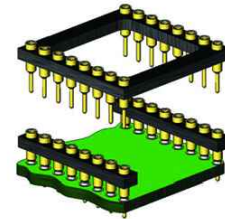
Before Soldering



During Soldering

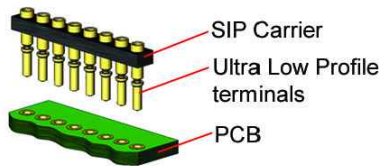


After Soldering

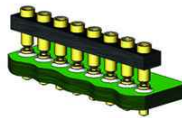


ULTRA-LOW PROFILE SIP

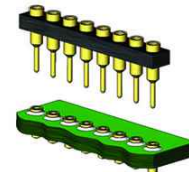
Before Soldering



During Soldering

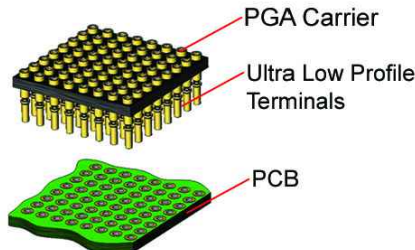


After Soldering



ULTRA-LOW PROFILE PGA

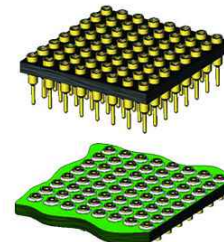
Before Soldering



During Soldering

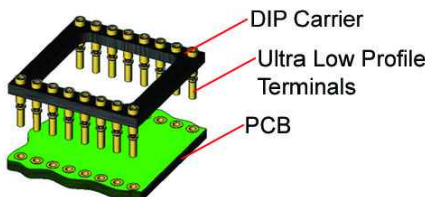


After Soldering

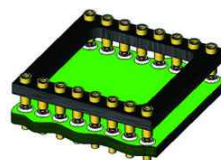


ULTRA LOW PROFILE DIP

Before Soldering



During Soldering



After Soldering

