

## *High-Reliability Gas Sensor Sockets for Sensorix GmbH*



*Featuring Andon's Unique Senstac<sup>TM</sup> Contact*

sensorix						
sensorix Part Number	Andon Part Number Replace "XXX" With terminal Type	Terminal Type		Pin Ø [in]	Figure Number	Page Number
		Thru-Hole	Surface Mount			
AN011400	R530-0403-01T-XXX-R27-L14	436P55	440P55	0.060	1	4
AN012400	R530-0403-01T-XXX-R27-L14	436P55	440P55	0.060	1	4
AN015400	R530-0403-01T-XXX-R27-L14	436P55	440P55	0.060	1	4
AN031400	R530-0403-01T-XXX-R27-L14	436P55	440P55	0.060	1	4
AN041400	R530-0403-01T-XXX-R27-L14	436P55	440P55	0.060	1	4
AN045400	R530-0403-01T-XXX-R27-L14	436P55	440P55	0.060	1	4
AN051400	R530-0403-01T-XXX-R27-L14	436P55	440P55	0.060	1	4
AN053400	R530-0403-01T-XXX-R27-L14	436P55	440P55	0.060	1	4
AN054400	R530-0403-01T-XXX-R27-L14	436P55	440P55	0.060	1	4
AN061400	R530-0403-01T-XXX-R27-L14	436P55	440P55	0.060	1	4
AN062400	R530-0403-01T-XXX-R27-L14	436P55	440P55	0.060	1	4
AN071400	R530-0403-01T-XXX-R27-L14	436P55	440P55	0.060	1	4
AN091400	R530-0403-01T-XXX-R27-L14	436P55	440P55	0.060	1	4
AN118400	R530-0403-01T-XXX-R27-L14	436P55	440P55	0.060	1	4
AN121400	R530-0403-01T-XXX-R27-L14	436P55	440P55	0.060	1	4
AN131400	R530-0403-01T-XXX-R27-L14	436P55	440P55	0.060	1	4
AN135400	R530-0403-01T-XXX-R27-L14	436P55	440P55	0.060	1	4
AN141400	R530-0403-01T-XXX-R27-L14	436P55	440P55	0.060	1	4
AN142400	R530-0403-01T-XXX-R27-L14	436P55	440P55	0.060	1	4
AN171400	R530-0403-01T-XXX-R27-L14	436P55	440P55	0.060	1	4
AN173400	R530-0403-01T-XXX-R27-L14	436P55	440P55	0.060	1	4
AN181400	R530-0403-01T-XXX-R27-L14	436P55	440P55	0.060	1	4
AN191400	R530-0403-01T-XXX-R27-L14	436P55	440P55	0.060	1	4
AN201400	R530-0403-01T-XXX-R27-L14	436P55	440P55	0.060	1	4
AN211400	R530-0403-01T-XXX-R27-L14	436P55	440P55	0.060	1	4
AN214400	R530-0403-01T-XXX-R27-L14	436P55	440P55	0.060	1	4
AN220400	R530-0403-01T-XXX-R27-L14	436P55	440P55	0.060	1	4
AN221400	R530-0403-01T-XXX-R27-L14	436P55	440P55	0.060	1	4
AN222400	R530-0403-01T-XXX-R27-L14	436P55	440P55	0.060	1	4
AN223400	R530-0403-01T-XXX-R27-L14	436P55	440P55	0.060	1	4
AN224400	R530-0403-01T-XXX-R27-L14	436P55	440P55	0.060	1	4
AN225400	R530-0403-01T-XXX-R27-L14	436P55	440P55	0.060	1	4
AN226400	R530-0403-01T-XXX-R27-L14	436P55	440P55	0.060	1	4
AN227400	R530-0403-01T-XXX-R27-L14	436P55	440P55	0.060	1	4
AN231400	R530-0403-01T-XXX-R27-L14	436P55	440P55	0.060	1	4
AN232400	R530-0403-01T-XXX-R27-L14	436P55	440P55	0.060	1	4
AN233400	R530-0403-01T-XXX-R27-L14	436P55	440P55	0.060	1	4
AN251400	R530-0403-01T-XXX-R27-L14	436P55	440P55	0.060	1	4
AN252400	R530-0403-01T-XXX-R27-L14	436P55	440P55	0.060	1	4
AN253400	R530-0403-01T-XXX-R27-L14	436P55	440P55	0.060	1	4
AN254400	R530-0403-01T-XXX-R27-L14	436P55	440P55	0.060	1	4
AN255400	R530-0403-01T-XXX-R27-L14	436P55	440P55	0.060	1	4
AN256400	R530-0403-01T-XXX-R27-L14	436P55	440P55	0.060	1	4
AN257400	R530-0403-01T-XXX-R27-L14	436P55	440P55	0.060	1	4
AN011700	R670-0804-03N-XXX-R27-L14	433E	285E	0.040	2	4
AN012700	R670-0804-03N-XXX-R27-L14	433E	285E	0.040	2	4
AN015700	R670-0804-03N-XXX-R27-L14	433E	285E	0.040	2	4

Heat sink socket available to reduce heat and noise. Contact Andon for details.

sensorix						
sensorix Part Number	Andon Part Number Replace "XXX" With terminal Type	Terminal Type		Pin Ø [in]	Figure Number	Page Number
		Thru-Hole	Surface Mount			
AN031700	R670-0804-03N-XXX-R27-L14	433E	285E	0.040	2	4
AN041700	R670-0804-03N-XXX-R27-L14	433E	285E	0.040	2	4
AN045700	R670-0804-03N-XXX-R27-L14	433E	285E	0.040	2	4
AN051700	R670-0804-03N-XXX-R27-L14	433E	285E	0.040	2	4
AN053700	R670-0804-03N-XXX-R27-L14	433E	285E	0.040	2	4
AN054700	R670-0804-03N-XXX-R27-L14	433E	285E	0.040	2	4
AN061700	R670-0804-03N-XXX-R27-L14	433E	285E	0.040	2	4
AN062700	R670-0804-03N-XXX-R27-L14	433E	285E	0.040	2	4
AN071700	R670-0804-03N-XXX-R27-L14	433E	285E	0.040	2	4
AN091700	R670-0804-03N-XXX-R27-L14	433E	285E	0.040	2	4
AN118700	R670-0804-03N-XXX-R27-L14	433E	285E	0.040	2	4
AN121700	R670-0804-03N-XXX-R27-L14	433E	285E	0.040	2	4
AN131700	R670-0804-03N-XXX-R27-L14	433E	285E	0.040	2	4
AN135700	R670-0804-03N-XXX-R27-L14	433E	285E	0.040	2	4
AN141700	R670-0804-03N-XXX-R27-L14	433E	285E	0.040	2	4
AN142700	R670-0804-03N-XXX-R27-L14	433E	285E	0.040	2	4
AN171700	R670-0804-03N-XXX-R27-L14	433E	285E	0.040	2	4
AN173700	R670-0804-03N-XXX-R27-L14	433E	285E	0.040	2	4
AN181700	R670-0804-03N-XXX-R27-L14	433E	285E	0.040	2	4
AN191700	R670-0804-03N-XXX-R27-L14	433E	285E	0.040	2	4
AN201700	R670-0804-03N-XXX-R27-L14	433E	285E	0.040	2	4
AN211700	R670-0804-03N-XXX-R27-L14	433E	285E	0.040	2	4
AN214700	R670-0804-03N-XXX-R27-L14	433E	285E	0.040	2	4
AN220700	R670-0804-03N-XXX-R27-L14	433E	285E	0.040	2	4
AN221700	R670-0804-03N-XXX-R27-L14	433E	285E	0.040	2	4
AN222700	R670-0804-03N-XXX-R27-L14	433E	285E	0.040	2	4
AN223700	R670-0804-03N-XXX-R27-L14	433E	285E	0.040	2	4
AN224700	R670-0804-03N-XXX-R27-L14	433E	285E	0.040	2	4
AN225700	R670-0804-03N-XXX-R27-L14	433E	285E	0.040	2	4
AN226700	R670-0804-03N-XXX-R27-L14	433E	285E	0.040	2	4
AN227700	R670-0804-03N-XXX-R27-L14	433E	285E	0.040	2	4
AN231700	R670-0804-03N-XXX-R27-L14	433E	285E	0.040	2	4
AN232700	R670-0804-03N-XXX-R27-L14	433E	285E	0.040	2	4
AN233700	R670-0804-03N-XXX-R27-L14	433E	285E	0.040	2	4
AN251700	R670-0804-03N-XXX-R27-L14	433E	285E	0.040	2	4
AN252700	R670-0804-03N-XXX-R27-L14	433E	285E	0.040	2	4
AN253700	R670-0804-03N-XXX-R27-L14	433E	285E	0.040	2	4
AN254700	R670-0804-03N-XXX-R27-L14	433E	285E	0.040	2	4
AN255700	R670-0804-03N-XXX-R27-L14	433E	285E	0.040	2	4
AN256700	R670-0804-03N-XXX-R27-L14	433E	285E	0.040	2	4
AN257700	R670-0804-03N-XXX-R27-L14	433E	285E	0.040	2	4
AN011000	R200-0404-01T-XXX-R27-L14	75S	265S	0.018	3	4
AN012000	R200-0404-01T-XXX-R27-L14	75S	265S	0.018	3	4
AN015000	R200-0404-01T-XXX-R27-L14	75S	265S	0.018	3	4
AN031000	R200-0404-01T-XXX-R27-L14	75S	265S	0.018	3	4
AN041000	R200-0404-01T-XXX-R27-L14	75S	265S	0.018	3	4
AN045000	R200-0404-01T-XXX-R27-L14	75S	265S	0.018	3	4

sensorix						
sensorix Part Number	Andon Part Number Replace "XXX" With terminal Type	Terminal Type		Pin Ø [in]	Figure Number	Page Number
		Thru-Hole	Surface Mount			
AN051000	R200-0404-01T-XXX-R27-L14	75S	265S	0.018	3	4
AN053000	R200-0404-01T-XXX-R27-L14	75S	265S	0.018	3	4
AN054000	R200-0404-01T-XXX-R27-L14	75S	265S	0.018	3	4
AN061000	R200-0404-01T-XXX-R27-L14	75S	265S	0.018	3	4
AN062000	R200-0404-01T-XXX-R27-L14	75S	265S	0.018	3	4
AN071000	R200-0404-01T-XXX-R27-L14	75S	265S	0.018	3	4
AN091000	R200-0404-01T-XXX-R27-L14	75S	265S	0.018	3	4
AN118000	R200-0404-01T-XXX-R27-L14	75S	265S	0.018	3	4
AN121000	R200-0404-01T-XXX-R27-L14	75S	265S	0.018	3	4
AN131000	R200-0404-01T-XXX-R27-L14	75S	265S	0.018	3	4
AN135000	R200-0404-01T-XXX-R27-L14	75S	265S	0.018	3	4
AN141000	R200-0404-01T-XXX-R27-L14	75S	265S	0.018	3	4
AN142000	R200-0404-01T-XXX-R27-L14	75S	265S	0.018	3	4
AN171000	R200-0404-01T-XXX-R27-L14	75S	265S	0.018	3	4
AN173000	R200-0404-01T-XXX-R27-L14	75S	265S	0.018	3	4
AN181000	R200-0404-01T-XXX-R27-L14	75S	265S	0.018	3	4
AN191000	R200-0404-01T-XXX-R27-L14	75S	265S	0.018	3	4
AN201000	R200-0404-01T-XXX-R27-L14	75S	265S	0.018	3	4
AN211000	R200-0404-01T-XXX-R27-L14	75S	265S	0.018	3	4
AN214000	R200-0404-01T-XXX-R27-L14	75S	265S	0.018	3	4
AN220000	R200-0404-01T-XXX-R27-L14	75S	265S	0.018	3	4
AN221000	R200-0404-01T-XXX-R27-L14	75S	265S	0.018	3	4
AN222000	R200-0404-01T-XXX-R27-L14	75S	265S	0.018	3	4
AN223000	R200-0404-01T-XXX-R27-L14	75S	265S	0.018	3	4
AN224000	R200-0404-01T-XXX-R27-L14	75S	265S	0.018	3	4
AN225000	R200-0404-01T-XXX-R27-L14	75S	265S	0.018	3	4
AN226000	R200-0404-01T-XXX-R27-L14	75S	265S	0.018	3	4
AN227000	R200-0404-01T-XXX-R27-L14	75S	265S	0.018	3	4
AN231000	R200-0404-01T-XXX-R27-L14	75S	265S	0.018	3	4
AN232000	R200-0404-01T-XXX-R27-L14	75S	265S	0.018	3	4
AN233000	R200-0404-01T-XXX-R27-L14	75S	265S	0.018	3	4
AN251000	R200-0404-01T-XXX-R27-L14	75S	265S	0.018	3	4
AN252000	R200-0404-01T-XXX-R27-L14	75S	265S	0.018	3	4
AN253000	R200-0404-01T-XXX-R27-L14	75S	265S	0.018	3	4
AN254000	R200-0404-01T-XXX-R27-L14	75S	265S	0.018	3	4
AN255000	R200-0404-01T-XXX-R27-L14	75S	265S	0.018	3	4
AN256000	R200-0404-01T-XXX-R27-L14	75S	265S	0.018	3	4
AN257000	R200-0404-01T-XXX-R27-L14	75S	265S	0.018	3	4

UNITS: IN [mm]

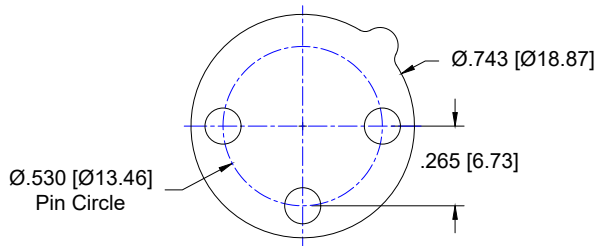


FIG: 1

**Thru-Hole:** R530-0403-01T-436P55-R27-L14

**Surface Mount:** R530-0403-01T-440P55-R27-L14

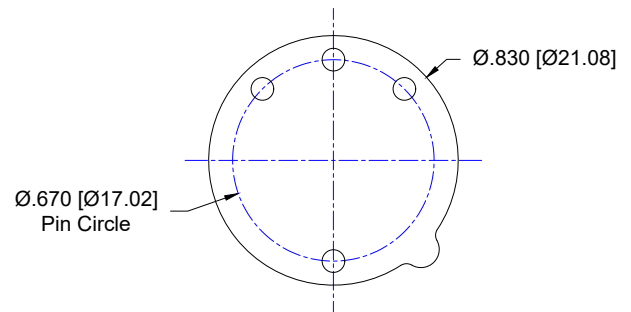


FIG: 2

**Thru-Hole:** R670-0804-01T-433E-R27-L14

**Surface Mount:** R670-0804-01T-285E-R27-L14

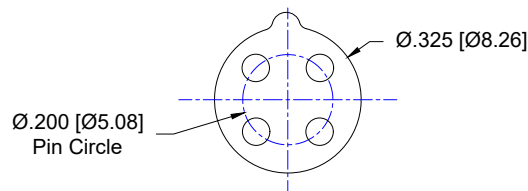
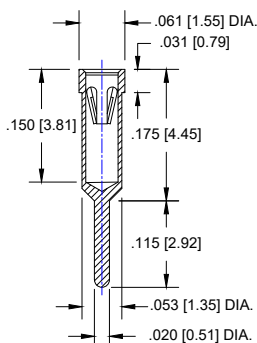


FIG: 3

**Thru-Hole:** R200-0404-01T-75S-R27-L14

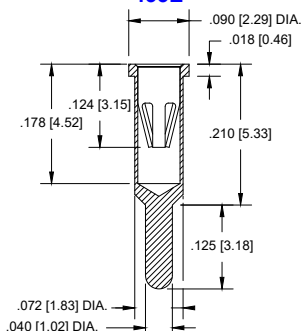
**Surface Mount:** R200-0404-01T-265S-R27-L14

## -75S

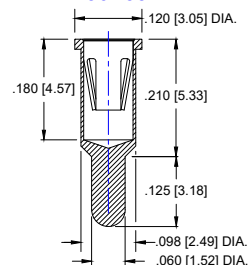


## THRU HOLE OPTION

### -433E

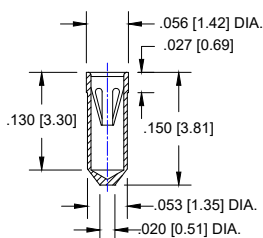


### -436P55

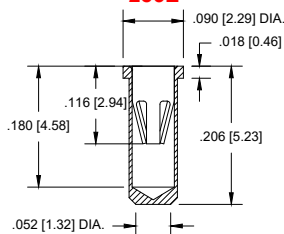


## SURFACE MOUNT OPTION

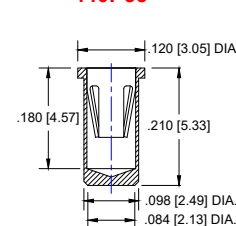
### -265S



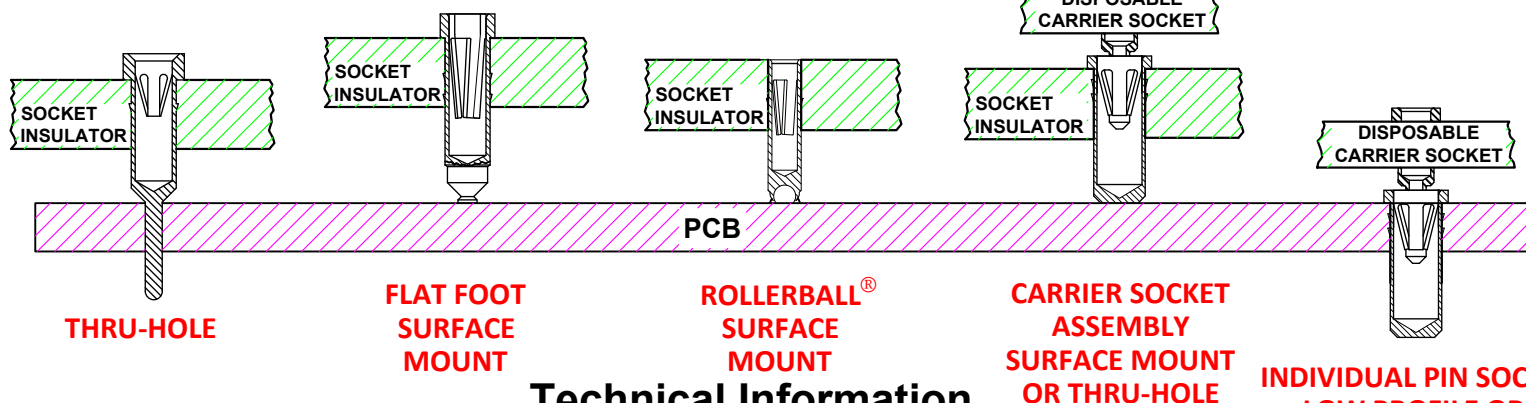
### -285E



### -440P55



## Socket Terminal Options



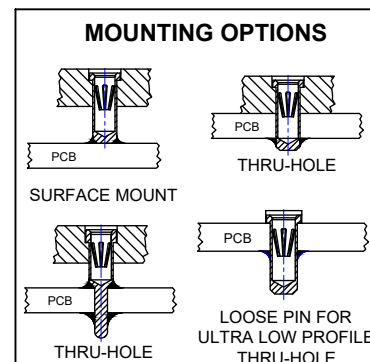
## Technical Information

### Material:

Insulator: Hi-Temp UL 94V-O  
Terminal: Brass, per ASTM-B16  
Contact: BeCu, Per ASTM-B194

**Plating: RoHS COMPLIANT**  
**R27 TERMINAL: GOLD / CONTACT: GOLD**  
**OTHER PLATINGS AVAILABLE**

Terminal Acceptance and Forces							
Thru Hole Socket Terminals				Surface Mount Socket Terminals			
Thru Hole Terminal	Accepts Pin Diameter	Insertion Force	Withdrawal Force	Surface Mount Terminal	Accepts Pin Diameter	Insertion Force	Withdrawal Force
-75S	Ø.018 [Ø0.46]	9.0 oz Avg.	2.0 oz Min	-265S	Ø.018 [Ø0.46]	9.0 oz Avg.	2.0 oz Min
-433E	Ø.040 [Ø1.02]	36.0 oz Max	3.9 oz Min	-285E	Ø.040 [Ø1.02]	36.0 oz Max	3.9 oz Min
-436P55	Ø.060 [Ø1.52]	15.5 oz Max	2.1 oz Min	-440P55	Ø.060 [Ø1.52]	15.5 oz Max	2.1 oz Min



©Copyright 2024 Andon Electronics Corporation. All Rights Reserved. This material is protected under US and other copyrights and may not be copied, sold, or redistributed in any form without written permission of Andon Electronics Corporation. Copyrights and trademarks are property of their respective companies. We reserve the right to change specifications without notice. Andon makes no warranty, expressed or implied, as to the suitability of the sockets for the intended purpose.

\*Sockets are not drawn to scale Sensorix, GmbH 05/22/2024

**ANDON ELECTRONICS CORPORATION**  
4 Court Drive, Lincoln RI 02865, United States of America

[www.andonelectronics.com](http://www.andonelectronics.com) or [www.andonelect.com](http://www.andonelect.com)  
Phone 401-333-0388 Fax 401-333-0287  
Email [Info@andonelect.com](mailto:Info@andonelect.com)

**For fast, accurate placement of SIP sockets and ultra-low profile terminals**

**Phase 1:**  
Receive Carrier Assemblies designed to your pin layout.



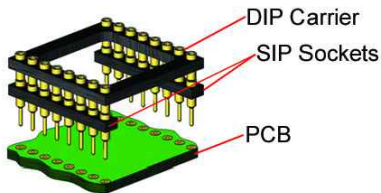
**Phase 2:**  
Place carrier assemblies onto PCB; run through your soldering process.



**Phase 3:**  
Remove carrier and plug in your device; discard carrier or send back to our factory for reloading.

## DIP

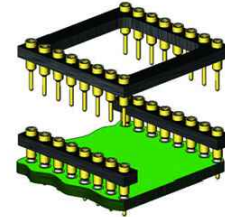
### Before Soldering



### During Soldering

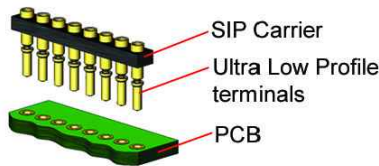


### After Soldering

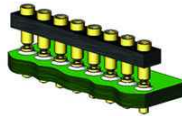


## ULTRA-LOW PROFILE SIP

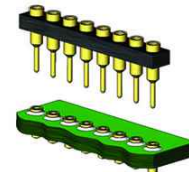
### Before Soldering



### During Soldering

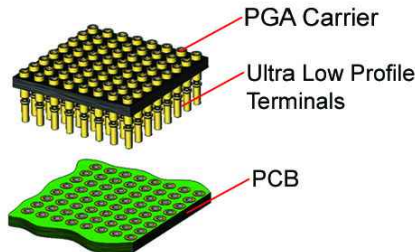


### After Soldering



## ULTRA-LOW PROFILE PGA

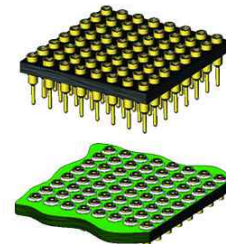
### Before Soldering



### During Soldering

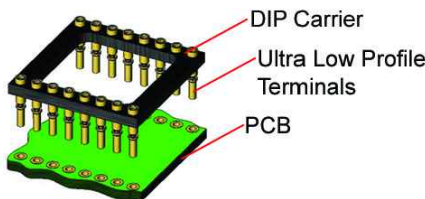


### After Soldering

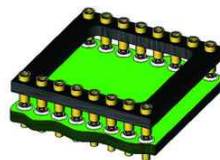


## ULTRA LOW PROFILE DIP

### Before Soldering



### During Soldering



### After Soldering

