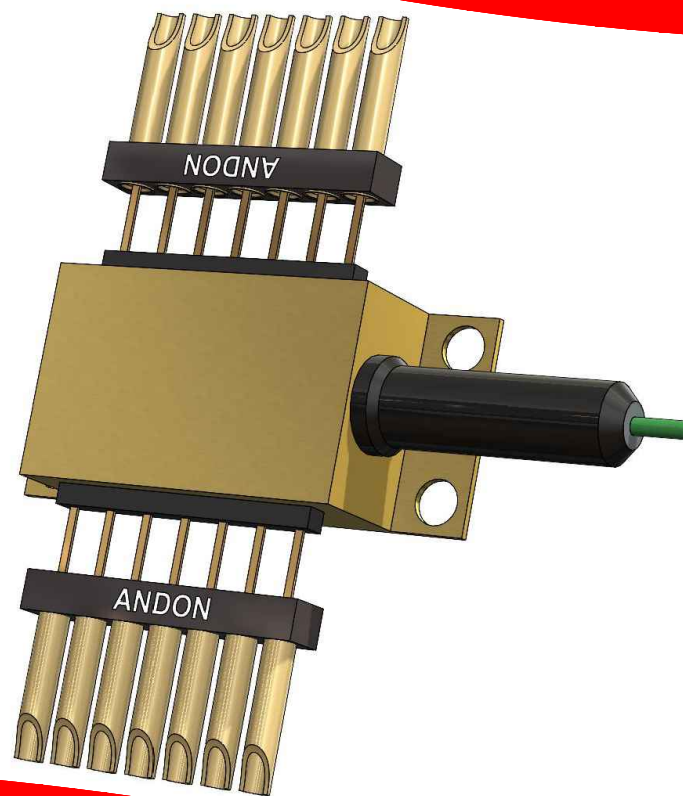




## ***High-Reliability Optoelectronic Sockets for IMM Photonics***

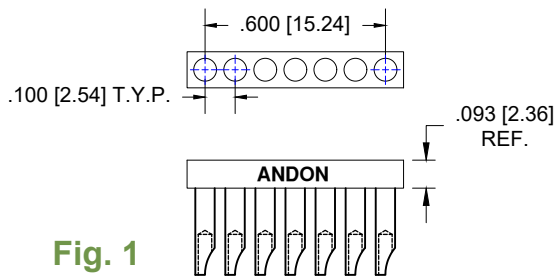


**imm photonics**

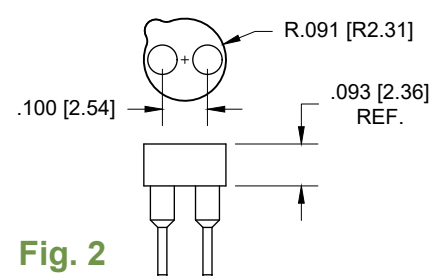


***Featuring Andon's Unique Senstac<sup>TM</sup> Contact***

IMM PHOTONICS						
IMM Photonics Part Number	Andon Part Number Replace "XXX" With terminal Type	Terminal Type		Pin Ø [in]	Figure Number	Page Number
		Thru-Hole	Surface Mount			
1MV-850-1-PL-T046	R100-0402-03T-XXX-R27-L14	75S	384S	0.018	2	1
GFUV-T10GD-L	R100-0402-03T-XXX-R27-L14	75S	384S	0.018	2	1
GVGR-T11GD	R100-0402-03T-XXX-R27-L14	75S	384S	0.018	2	1
QLD1061-3030	C10-007-07-01-XXX-R27-L14	01S	93S	0.019	1	1
QLD1061-5330	C10-007-07-01-XXX-R27-L14	01S	93S	0.019	1	1
QLD1061-6430-11	C10-007-07-01-XXX-R27-L14	01S	93S	0.019	1	1
QLD1061-7030	C10-007-07-01-XXX-R27-L14	01S	93S	0.019	1	1
QLD1061-8330	C10-007-07-01-XXX-R27-L14	01S	93S	0.019	1	1
QLD1161-2030	C10-007-07-01-XXX-R27-L14	01S	93S	0.019	1	1
QLD1161-64X0X	C10-007-07-01-XXX-R27-L14	01S	93S	0.019	1	1
QLD1161-XX50C	C10-007-07-01-XXX-R27-L14	01S	93S	0.019	1	1
QLD123F-4010	R079-0404-01T-XXX-R27-L14	274K	281K	0.018	3	2
QLD1261-4005	C10-007-07-01-XXX-R27-L14	01S	93S	0.019	1	1
QLF063A-4080T30	R079-0403-01T-XXX-R27-L14	274K	281K	0.018	4	2
QLF063-P120	R079-0403-01T-XXX-R27-L14	274K	281K	0.018	4	2
QLF063X	R079-0403-01T-XXX-R27-L14	274K	281K	0.018	4	2
QLF063X-4030T50	R079-0403-01T-XXX-R27-L14	274K	281K	0.018	4	2
QLF063X-85A0 SERIES	R079-0403-01T-XXX-R27-L14	274K	281K	0.018	4	2
QLF063X-AA	R079-0403-01T-XXX-R27-L14	274K	281K	0.018	4	2
QLF073X	R079-0403-01T-XXX-R27-L14	274K	281K	0.018	4	2
QLF083A/QLF083D	R079-0403-01T-XXX-R27-L14	274K	281K	0.018	4	2
QLF093A-05A0/QLF093D-05A0	R079-0403-01T-XXX-R27-L14	274K	281K	0.018	4	2
QLF093A-40B8/QLF093D-40B8	R079-0403-01T-XXX-R27-L14	274K	281K	0.018	4	2
QLF103E-6450	R079-0404-01T-XXX-R27-L14	274K	281K	0.018	3	2
QLF1335-AD	R079-0404-01T-XXX-R27-L14	274K	281K	0.018	3	2
QLF1335-AE	R079-0404-01T-XXX-R27-L14	274K	281K	0.018	3	2
QLF1335-T200	R079-0404-01T-XXX-R27-L14	274K	281K	0.018	3	2
QLF1339-AA	R079-0404-01T-XXX-R27-L14	274K	281K	0.018	3	2
TXPI 1037 (Red)	R050-0402-02T-XXX-R27-L14	274U	281U	0.018	5	2
TXPI 1038 (Yellow)	R050-0402-02T-XXX-R27-L14	274U	281U	0.018	5	2
TXPI 1039 (Green)	R050-0402-02T-XXX-R27-L14	274U	281U	0.018	5	2
TXPI 1050 (Red)	R050-0402-02T-XXX-R27-L14	274U	281U	0.018	5	2
TXPI 1051 (Yellow)	R050-0402-02T-XXX-R27-L14	274U	281U	0.018	5	2
TXPI 1052 (Green)	R050-0402-02T-XXX-R27-L14	274U	281U	0.018	5	2
TXPI 1201 (Red)	R050-0402-02T-XXX-R27-L14	274U	281U	0.018	5	2
TXPI 1202 (Yellow)	R050-0402-02T-XXX-R27-L14	274U	281U	0.018	5	2
TXPI 1203 (Green)	R050-0402-02T-XXX-R27-L14	274U	281U	0.018	5	2
TXPI 1315 (Blue)	R050-0402-02T-XXX-R27-L14	274U	281U	0.018	5	2



**Solder Cup: (2) C10-007-07-01-627E-R27-L14**

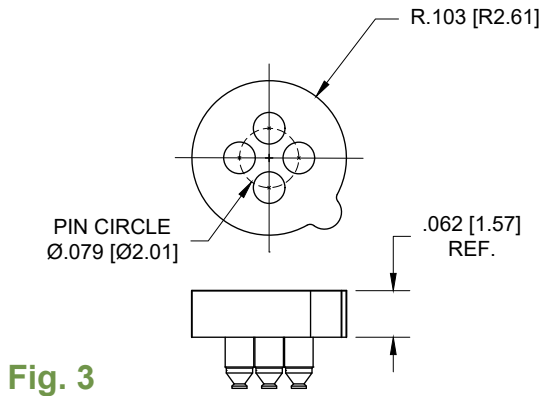


Through-Hole: R100-0402-03T-75S-R27-L14  
Surface Mount: R100-0402-03T-384S-R27-L14

## IMM Photonics GmbH Continued

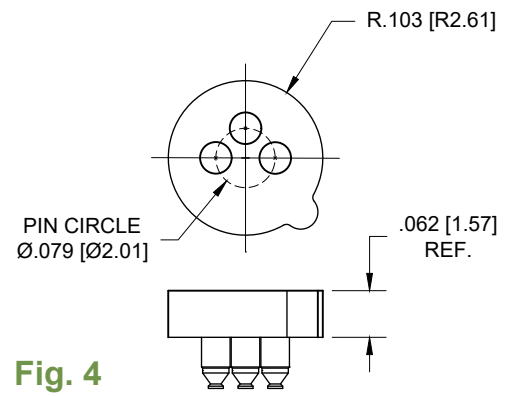
### Socket Terminal Details

Cross Section View Shown Units: in [mm]



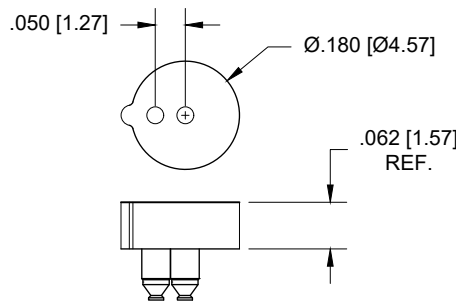
**Fig. 3**

Thru-Hole: R079-0404-01T-**281K**-R27-L14  
Surface Mount R079-0404-01T-**274K**-R27-L14



**Fig. 4**

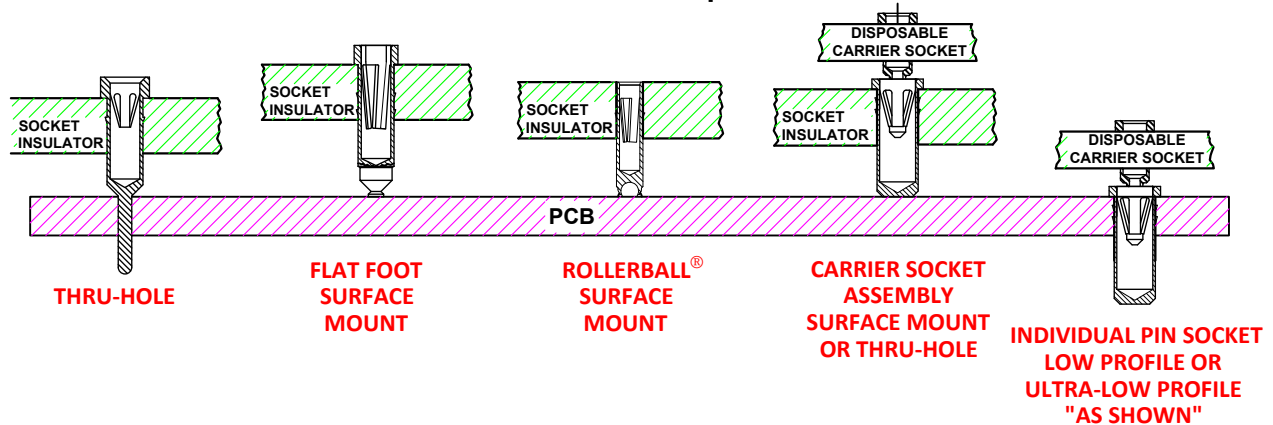
Through-Hole: R079-0403-01T-**281K**-R27-L14  
Surface Mount: R079-0403-01T-**274K**-R27-L14



**FIG:05**

Thru-Hole: R050-0402-02T-**274K**-R27-L14  
Surface Mount: R050-0402-02T-**281K**-R27-L14

## Socket Terminal Options



©Copyright 2024 Andon Electronics Corporation. All Rights Reserved. This material is protected under US and other copyrights and may not be copied, sold, or redistributed in any form without written permission of Andon Electronics Corporation. Copyrights and trademarks are property of their respective companies. We reserve the right to change specifications without notice. Andon makes no warranty, expressed or implied, as to the suitability of the sockets for the intended purpose.

**RoHS Compliant**

**Andon Proprietary Information**

\*Sockets are not drawn to scale IMM Photonics 6/13/2024

**ANDON ELECTRONICS CORPORATION**  
4 Court Drive, Lincoln RI 02865, United States of America

[www.andonelectronics.com](http://www.andonelectronics.com) or [www.andonelect.com](http://www.andonelect.com)  
Phone 401-333-0388 Fax 401-333-0287  
Email [Info@andonelect.com](mailto:Info@andonelect.com)

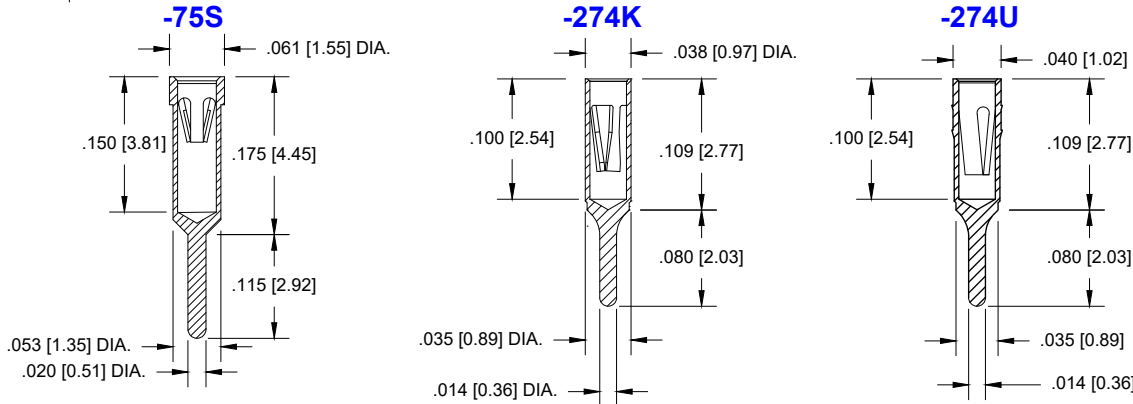
## IMM Photonics GmbH Continued

### Socket Terminal Details

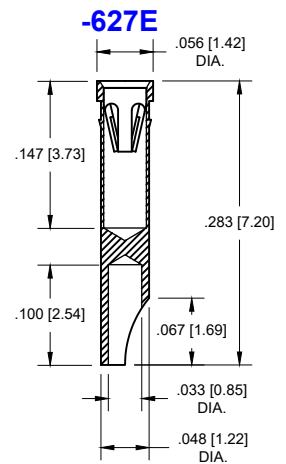
**Cross Section View Shown Units: in [mm]**

Other Terminal Layouts and Configurations available

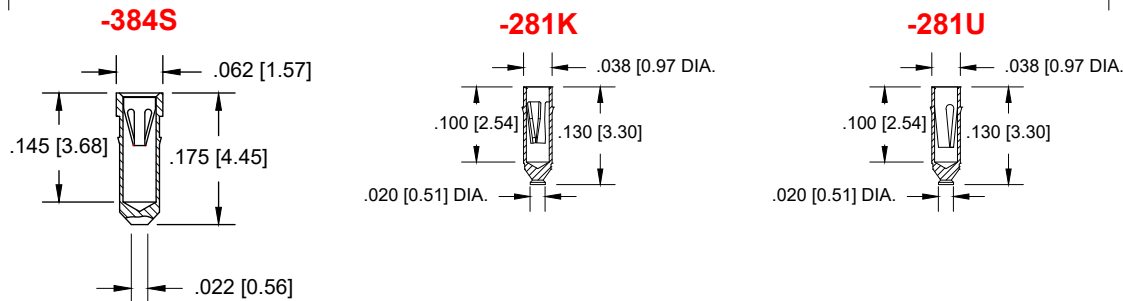
#### THRU HOLE OPTION



#### SOLDER-CUP OPTION



#### SURFACE MOUNT OPTION



## Technical Information

### Material:

Insulator: Hi-Temp UL 94V-O  
 Terminal: Brass, per ASTM-B16  
 Contact: BeCu, Per ASTM-B194

### Plating: RoHS COMPLIANT

**R27 TERMINAL: GOLD / CONTACT: GOLD**

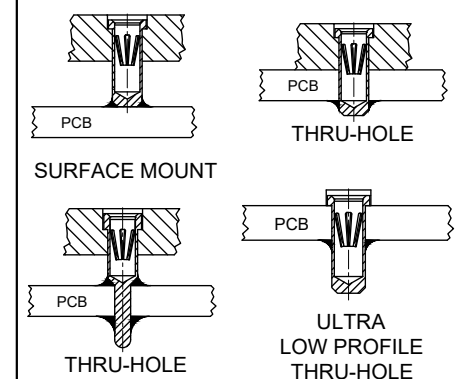
**R17 TERMINAL: TIN / CONTACT: GOLD**

**OTHER PLATINGS AVAILABLE**

### Terminal Acceptance and Forces

Thru Hole Terminals				Surface Mount Terminals			
Thru Hole Terminal	Accepts Pin Diameter	Insertion Force	Withdrawal Force	Thru Hole Terminal	Accepts Pin Diameter	Insertion Force	Withdrawal Force
75S	0.018 [ø0.46]	9.0 OZ AVG.	2.0 OZ MIN.	384S	0.018 [ø0.46]	9.0 OZ AVG.	2.0 OZ MIN.
274K	0.018 [ø0.46]	1.0 OZ AVG.	0.5 OZ MIN.	281K	0.018 [ø0.46]	1.0 OZ AVG.	0.5 OZ MIN.
274U	0.018 [ø0.46]	2.8 OZ AVG.	0.5 OZ MIN.	281U	0.018 [ø0.46]	2.8 OZ AVG.	0.5 OZ MIN.
627E	0.018 [ø0.46]	9.0 OZ AVG.	2.0 OZ MIN.	N/A	N/A	N/A	N/A

### MOUNTING OPTIONS



©Copyright 2024 Andon Electronics Corporation. All Rights Reserved. This material is protected under US and other copyrights and may not be copied, sold, or redistributed in any form without written permission of Andon Electronics Corporation. Copyrights and trademarks are property of their respective companies. We reserve the right to change specifications without notice. Andon makes no warranty, expressed or implied, as to the suitability of the sockets for the intended purpose.

**"ANDON PROPRIETARY INFORMATION"**

**RoHS Compliant**

\*Sockets are not drawn to scale IMM Photonics 6/13/2024

**ANDON ELECTRONICS CORPORATION**  
 4 Court Drive, Lincoln RI 02865, United States of America

[www.andonelectronics.com](http://www.andonelectronics.com) or [www.andonelect.com](http://www.andonelect.com)  
 Phone 401-333-0388 Fax 401-333-0287  
 Email [Info@andonelect.com](mailto:Info@andonelect.com)



## For fast, accurate placement of SIP sockets and ultra-low profile terminals

**Phase 1:**  
Receive Carrier Assemblies  
designed to your pin layout.



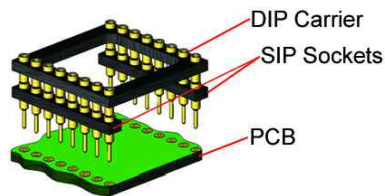
**Phase 2:**  
Place carrier assemblies onto PCB;  
run through your soldering process.



**Phase 3:**  
Remove carrier and plug in your device;  
discard carrier.

### DIP

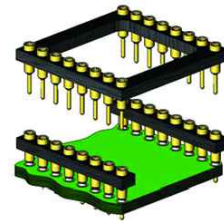
#### Before Soldering



#### During Soldering

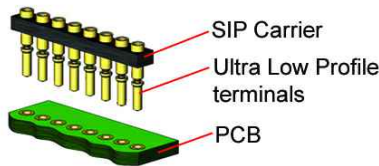


#### After Soldering



### ULTRA-LOW PROFILE SIP

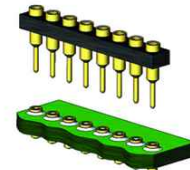
#### Before Soldering



#### During Soldering

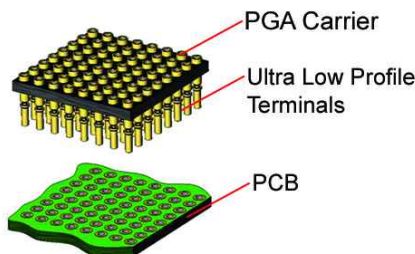


#### After Soldering



### ULTRA-LOW PROFILE PGA

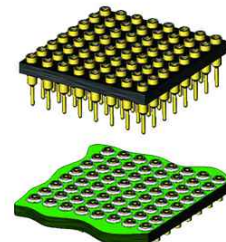
#### Before Soldering



#### During Soldering

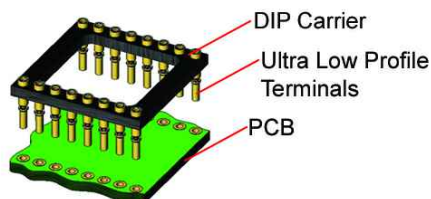


#### After Soldering

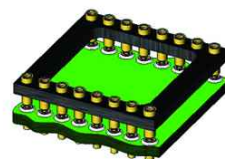


### ULTRA LOW PROFILE DIP

#### Before Soldering



#### During Soldering



#### After Soldering

