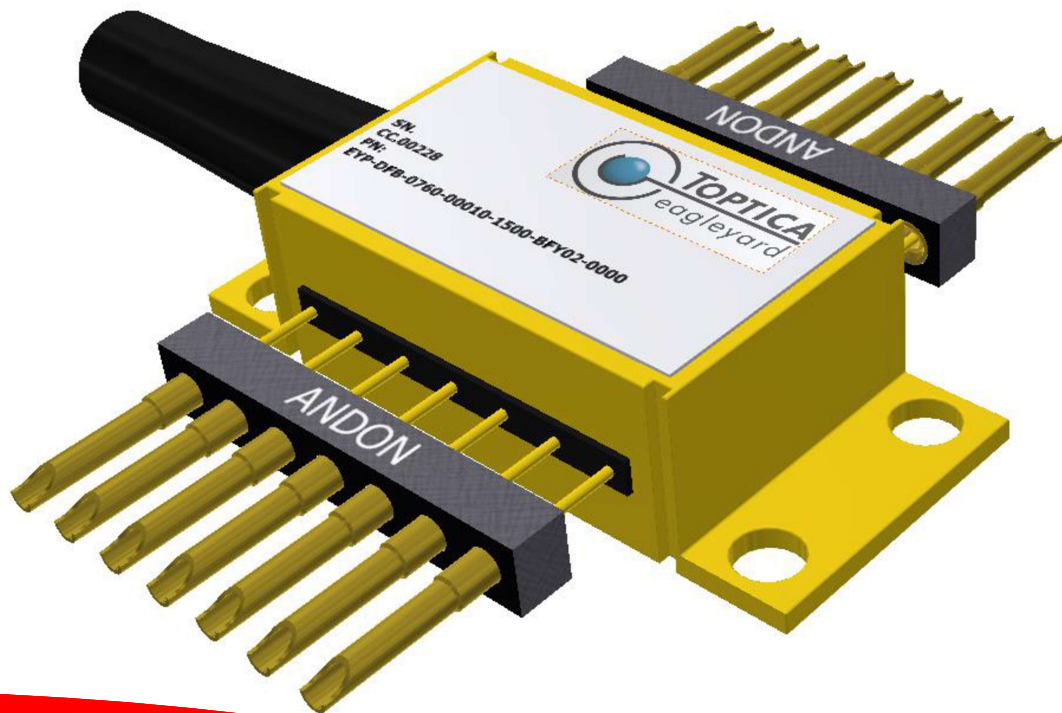




High-Reliability Optoelectronic Sockets for Toptica eagleyard



Featuring Andon's Unique SenstacTM Contact

Toptica eagleyard							
Toptica eagleyard Model Number "xxxx" stands for specific Product Type		Andon Part Number Replace "XXX" with Terminal Type	Terminal Type Thru-Hole Surface Mount		Pin Ø [in]	Figure Number	Page Number
SINGLE MODE LASER DIODES	EYP-RWL-xxxx-xxxxx-xxxx-BFW02-xxxx	(2) C10-007-07-01-556S-R27-L14	-	-	.018	3	1
	EYP-RWL-xxxx-xxxxx-xxxx-TOSxx-xxxx	R080-0403-01N-XXX-R27-L14	274K	281K	.018	4	2
	EYP-RWL-xxxx-xxxxx-xxxx-SOTxx-xxxx	R100-0403-04N-XXX-R27-L14	75S	265S	.018	1	1
SINGLE FREQUENCY LASER DIODES	EYP-DFB-xxxx-xxxxx-xxxx-BFYxx-xxxx	(2) C10-007-07-01-556S-R27-L14	-	-	.018	3	1
	EYP-DFB-xxxx-xxxxx-xxxx-BFWxx-xxxx	(2) C10-007-07-01-556S-R27-L14	-	-	.018	3	1
	EYP-DFB-xxxx-xxxxx-xxxx-SOTxx-xxxx	R100-0403-04N-XXX-R27-L14	75S	265S	.018	1	1
	EYP-DFB-xxxx-xxxxx-xxxx-TOCxx-xxxx	F500-SP09-01-XXX-R27-L14	433E	285E	.040	2	1
	EYP-DFB-xxxx-xxxxx-xxxx-TOVxx-xxxx	R200-0808-01T-XXX-R27-L14	75S	265S	.018	5	2
	EYP-DBR-xxxx-xxxxx-xxxx-TOCxx-xxxx	F500-SP09-01-XXX-R27-L14	433E	295E	.040	2	1
	EYP-DBR-xxxx-xxxxx-xxxx-BFYxx-xxxx	(2) C10-007-07-01-556S-R27-L14	-	-	.018	3	1
	EYP-DBR-xxxx-xxxxx-xxxx-BFWxx-xxxx	(2) C10-007-07-01-556S-R27-L14	-	-	.018	3	1
	EYP-RWS-xxxx-xxxxx-xxxx-SOTxx-xxxx	R100-0403-04N-XXX-R27-L14	75S	265S	.018	1	1
	EYP-RWS-xxxx-xxxxx-xxxx-TOSxx-xxxx	R080-0403-01N-XXX-R27-L14	274K	281K	.018	4	2
	EYP-RWS-xxxx-xxxxx-xxxx-TOVxx-xxxx	R200-0808-01T-XXX-R27-L14	75S	265S	.018	5	2
BROAD AREA LASER DIODES	EYP-BAL-xxxx-xxxxx-xxxx-SOTxx-xxxx	R100-0403-04N-XXX-R27-L14	75S	265S	.018	1	1
GAIN CHIPS	EYP-RWE-xxxx-xxxxx-xxxx-SOTxx-xxxx	R100-0403-04N-XXX-R27-L14	75S	265S	.018	1	1

Heat sink socket available to reduce heat and noise. Contact Andon for details.

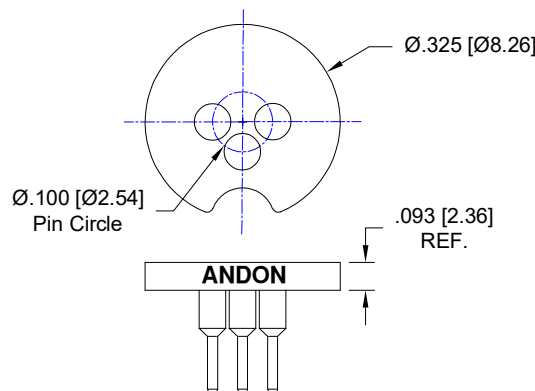


Fig. 1

Thru-Hole: R100-0403-04N-**75S**-R27-L14
Surface Mount: R100-0403-04N-**265S**-R27-L14

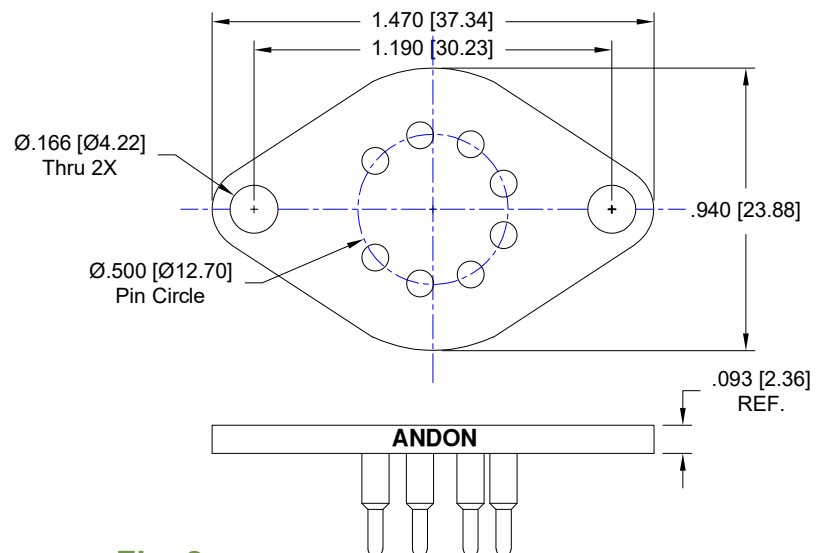


Fig. 2

Thru-Hole: F500-SP09-01-**433E**-R27-L14
Surface Mount: F500-SP09-01-**285E**-R27-L14

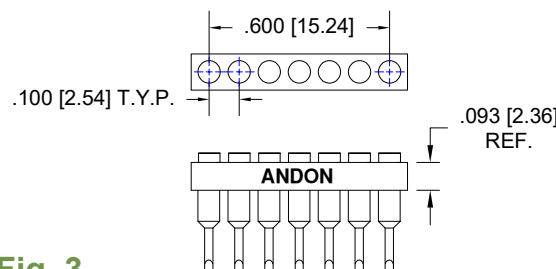


Fig. 3

Solder Cup: (2) C10-007-07-01-**556S**-R27-L14

Toptica eagleyard Continued

Socket Terminal Details

Cross Section View Shown Units: in [mm]

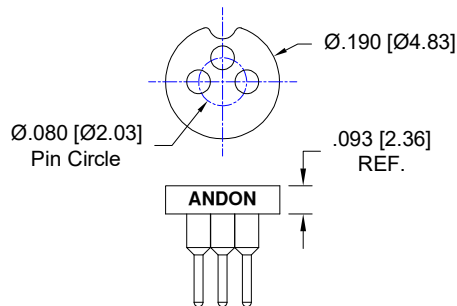


Fig. 4

Thru-Hole: R080-0403-01N-**274K**-R27-L14
Surface Mount: R080-0403-01N-**281K**-R27-L14

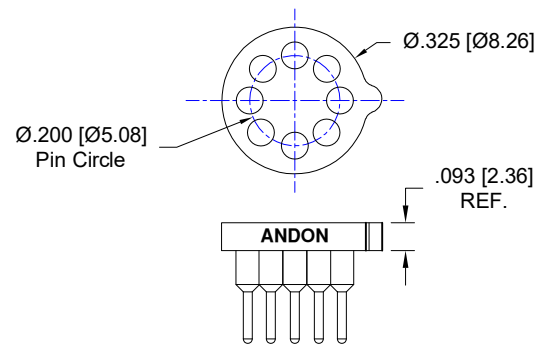
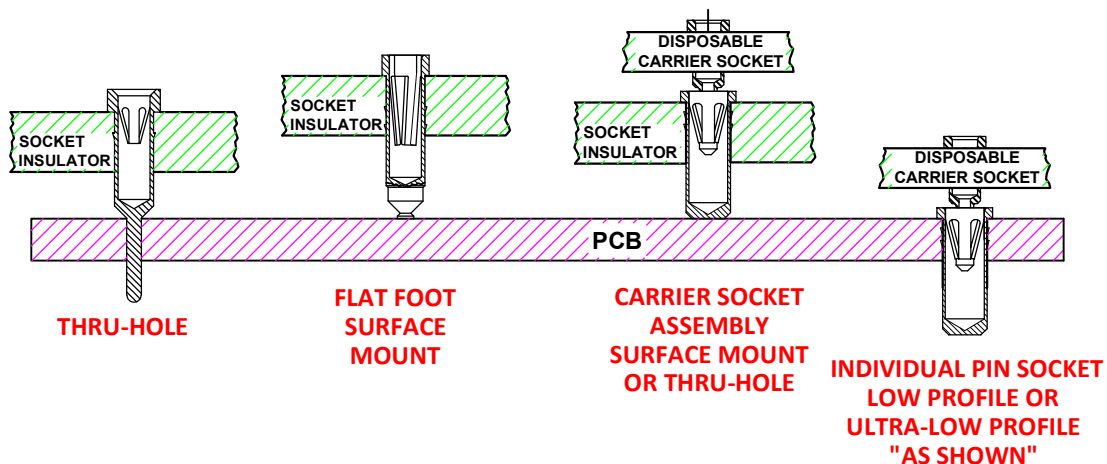


FIG: 5

Thru-Hole: R200-0808-01T-**75S**-R27-L14
Surface Mount: R200-0808-01T-**265S**-R27-L14

Socket Mounting Options

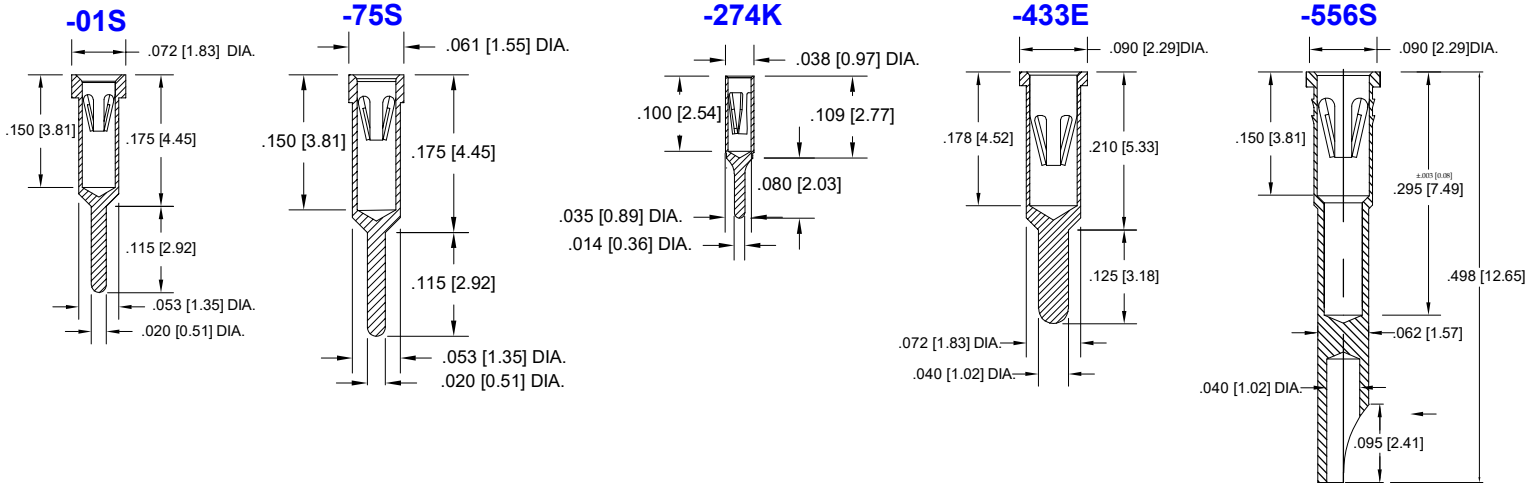


Toplica eagleyard *Continued*

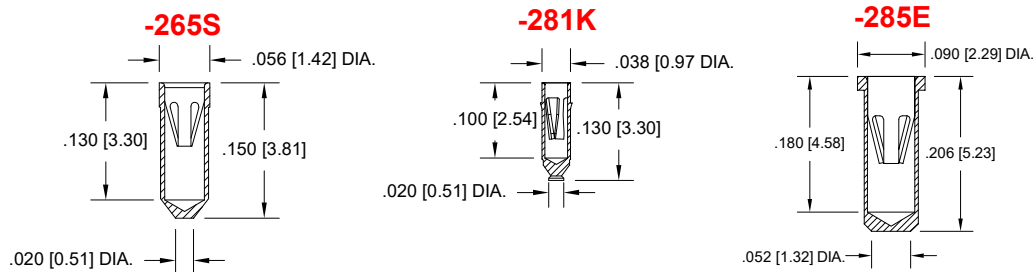
Socket Terminal Details

Cross Section View Shown Units: in [mm]
Other Terminal Layouts and Configurations available

THRU HOLE OPTION



SURFACE MOUNT OPTION



Technical Information

Material:

Insulator: Hi-Temp UL 94V-O
Terminal: Brass, per ASTM-B16
Contact: BeCu, Per ASTM-B194

Plating: RoHS COMPLIANT

R27 TERMINAL: GOLD / CONTACT: GOLD

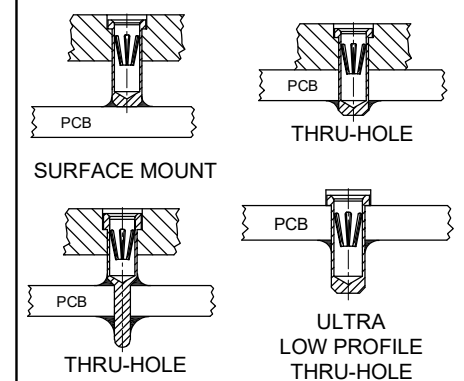
R17 TERMINAL: TIN / CONTACT: GOLD

OTHER PLATINGS AVAILABLE

Terminal Acceptance and Forces

Thru Hole Terminals				Surface Mount Terminals			
Thru Hole Terminal	Accepts Pin Diameter	Insertion Force	Withdrawal Force	Surface Mount Terminal	Accepts Pin Diameter	Insertion Force	Withdrawal Force
-01S	Ø.018 [Ø0.46]	9.0 oz Avg.	2.0 oz Min	-	-	-	-
-433E	Ø.040 [Ø1.02]	36.0 oz Max.	3.9 oz Min	-285E	Ø.040 [Ø1.02]	36.0 oz Max.	3.9 oz Min
-75S	Ø.018 [Ø0.46]	9.0 oz Avg.	2.0 oz Min	-265S	Ø.018 [Ø0.46]	9.0 oz Avg.	2.0 oz Min
-274K	Ø.018 [Ø0.46]	1.0 oz Avg.	0.5 oz Min	-281K	Ø.018 [Ø0.46]	1.0 oz Avg.	0.5 oz Min

MOUNTING OPTIONS



©Copyright 2024 Andon Electronics Corporation. All Rights Reserved. This material is protected under US and other copyrights and may not be copied, sold, or redistributed in any form without written permission of Andon Electronics Corporation. Copyrights and trademarks are property of their respective companies. We reserve the right to change specifications without notice. Andon makes no warranty, expressed or implied, as to the suitability of the sockets for the intended purpose.

"ANDON PROPRIETARY INFORMATION"

RoHS Compliant

*Sockets are not drawn to scale Toplica eagleyard 02/01/2024

For fast, accurate placement of SIP sockets and ultra-low profile terminals

Phase 1:
Receive Carrier Assemblies
designed to your pin layout.

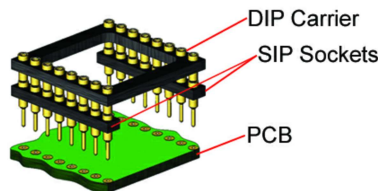


Phase 2:
Place carrier assemblies onto PCB;
run through your soldering process.



Phase 3:
Remove carrier and plug in your device;
discard carrier.

Before Soldering

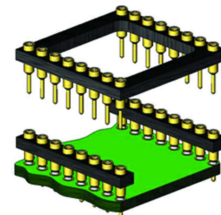


DIP

During Soldering

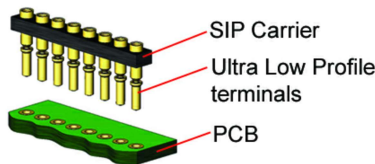


After Soldering

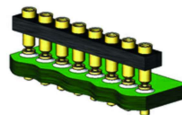


ULTRA-LOW PROFILE SIP

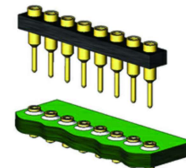
Before Soldering



During Soldering

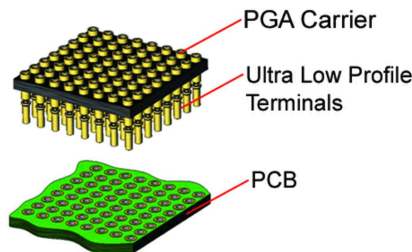


After Soldering

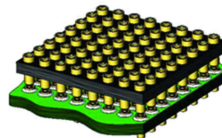


ULTRA-LOW PROFILE PGA

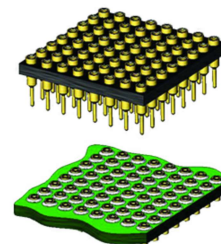
Before Soldering



During Soldering

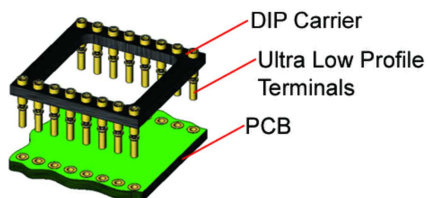


After Soldering

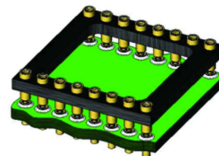


ULTRA LOW PROFILE DIP

Before Soldering



During Soldering



After Soldering

